

HIV AND SRHR LINKAGES INFOGRAPHIC SNAPSHOT BOTSWANA 2016



What's this
all about?

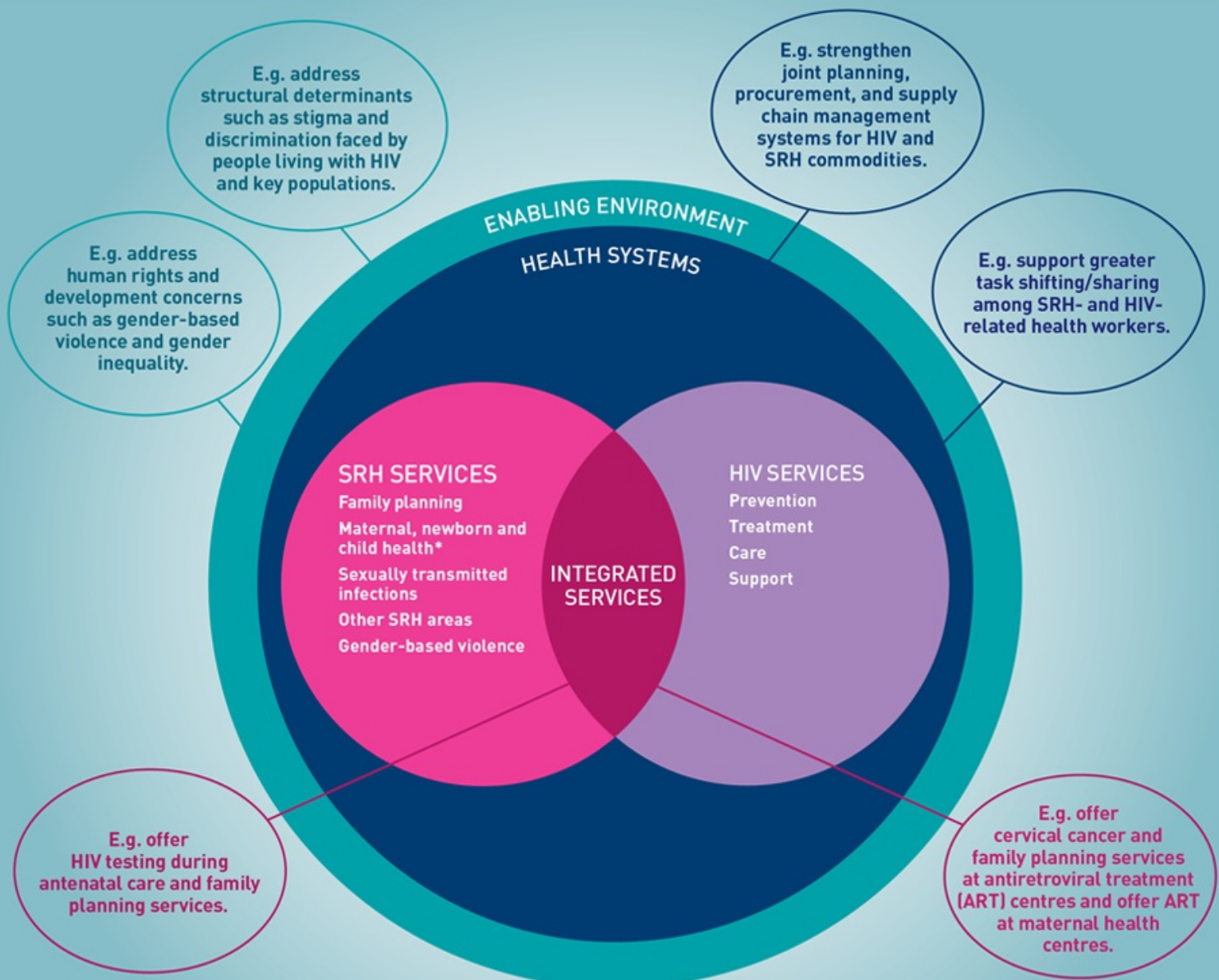


This country snapshot provides an overview of national level data for the full scope of HIV and sexual & reproductive health and rights (SRHR) linkages/integration at three levels:¹

- enabling environment (policy and legal)
- health systems
- integrated service delivery

By highlighting results, areas that need strengthening, and data gaps, this snapshot can be used for determining priorities, programme planning, and resource mobilization.

▲ also p.10



Source: Adapted from WHO, UNFPA, UNAIDS, IPPF (2005) Sexual and reproductive health and HIV/AIDS: A framework for priority linkages. http://srhhivlinkages.org/wp-content/uploads/2013/04/frameworkforprioritylinkages_2005_en.pdf

*Maternal health is an SRH service, which is often clustered with newborn and child health services.

Linkages versus integration²

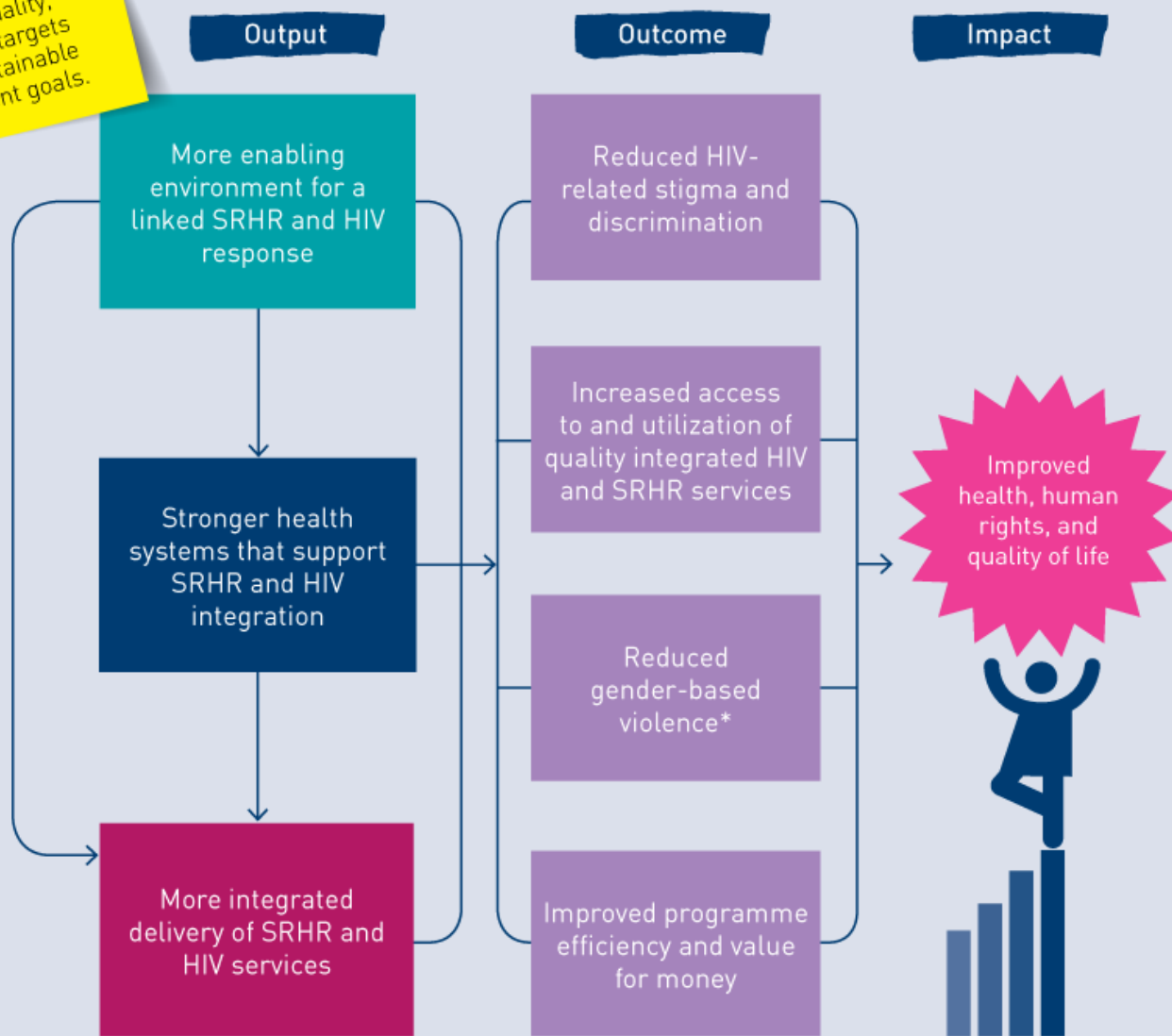
Linkages refer to bi-directional synergies in policy, systems, and services between SRH and HIV. It refers to a broader human rights-based approach, of which service integration is a subset.

Integration refers to the service delivery level and can be understood as joining operational programmes to ensure effective outcomes through many modalities (multi-tasked providers, referral, one-stop shop services under one roof, etc.).

Upholding human rights is intrinsic to the linkages agenda, in particular the human rights of people living with HIV, key populations, and women and girls.³

Linking HIV and SRHR responses is critical for reaching human rights, gender equality, and health targets for the sustainable development goals.

Theory of change for SRHR and HIV linkages



Source: Adapted from IPPF, UNFPA, WHO (2014) SRH and HIV Linkages Compendium: Indicators and Related Assessment Tools. Available at: <http://bit.ly/1KVaeT1>

* It is recognized that reducing stigma and discrimination and gender-based violence are also impact level measures and the outcome measures influence each other.



To find indicators and tools to measure progress

Visit <http://bit.ly/1KVaeT1>



To find out more about linkages/integration

Visit <http://srhhivlinkages.org>
- a collection of SRHR and HIV linkages resources.

Key HIV and SRHR intersections: Botswana data^{3a}

The intrinsic connections between HIV and SRHR are well-established, especially as HIV is predominantly sexually transmitted or associated with pregnancy, childbirth and breastfeeding.⁴



Where data is not available this is marked with



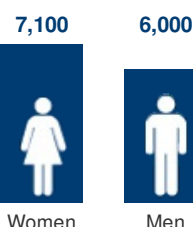
or



Population size 2.2 million^{4a} Life expectancy at birth 64^{4b} Fertility rate 2.8^{4c}

HIV is a leading cause of death in women of reproductive age (globally)⁵

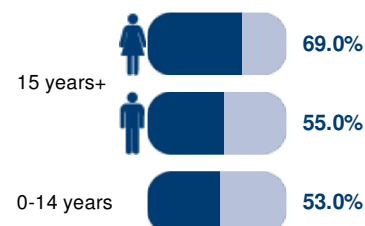
New adult HIV infections⁶



HIV prevalence (ages 15-49)⁸



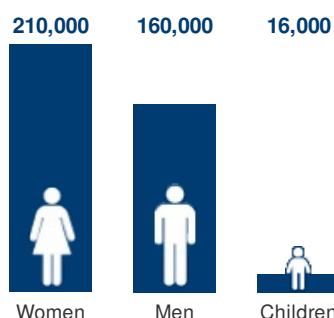
People living with HIV receiving ART¹⁰



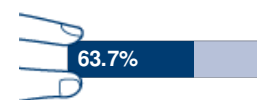
AIDS-related deaths among adults (ages 15+)⁷



People living with HIV⁹



HIV testing in the general population¹¹



HIV-associated maternal death contributes to maternal mortality¹²

Maternal mortality ratio¹³



Maternal deaths attributed to HIV¹⁴



Gender-based violence is a cause and consequence of HIV¹⁵
▲ also p.5 & 7

Prevalence of recent intimate partner violence¹⁶



HIV transmission to infants can occur during pregnancy, childbirth, and breastfeeding. This is more likely where there is acute maternal HIV infection.¹⁷

▲ also p.5

Mother-to-child HIV transmission rate (after breastfeeding)¹⁸



Pregnant women who know their HIV status¹⁹



Demand for family planning satisfied with a modern method of contraception (15-49)²⁰



Certain sexually transmitted infections (STIs) significantly increase the risk of acquiring and transmitting HIV²²
▲ also p.7

Male and female condoms provide triple protection from unintended pregnancies, HIV, and other STIs

Demand for family planning satisfied with a modern method of contraception for women living with HIV (15-49)²¹

Number of adults reported with syphilis²³



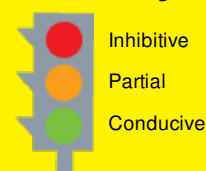
Condom use at last sex²⁴



Enabling environment (policy and legal)

SRHR and HIV strategies and policies should be interconnected to increase service provision and uptake. Effective responses also must go beyond health services to address human rights and development.

Support to SRHR and HIV linkages:



Strategies and policies

Is there a national HIV strategy?²⁵



If yes, have the following SRHR components been included as a measurable target:^{25a}

Condoms (with reference to STI prevention / contraceptive method)?	No
Prevention / elimination of mother-to-child transmission of HIV?	Yes
SRHR of people living with HIV?	Yes
Sexually transmitted infections?	No
Gender based violence?	Mentioned

Is there a national SRHR strategy?²⁶



If yes, have the following HIV components been included as a measurable target:^{26a}

Condoms (with reference to HIV prevention)?	Yes
Prevention / elimination of mother to child transmission of HIV?	No
SRHR of people living with HIV?	No
Sexually transmitted infections?	No
HIV counselling and testing?	No

Is there a national SRHR and HIV integration policy or strategy?²⁷



Laws

▲ also p.5

▲ also p.9

▲ also p.7

People living with HIV

Are there laws that:^{27a}

criminalise HIV transmission or exposure? ²⁸	Yes	28a
impose HIV specific restrictions on entry, stay or residence? ²⁹	No	29a
address HIV-related discrimination and protect people living with HIV? ³⁰	Yes	30a

Key populations

Are there laws that:^{30b}

criminalise same-sex sexual activities? ³¹	Yes	31a
deem sex work as illegal? ³²	Yes	32a
mandate the death penalty for drug offences? ³³	No	33a
demand compulsory detention for people who use drugs? ³⁴	No	34a
recognise a third, neutral and non-specific gender besides male and female? ³⁵	No	35a

Gender-based violence

Are there laws that:

address gender-based violence? ³⁶	Yes	36a
penalise rape in marriage? ³⁷	No	37a
allow free entry into marriage and divorce? ³⁸	Yes Full enforcement	38a
allow the removal of violent spouses? ³⁹	Yes Limited enforcement	39a

Other laws

▲ also p.8

Are there laws that:

make sexuality education mandatory? ⁶⁰	DATA NOT AVAILABLE
allow legal abortion? ⁶¹	Yes: to save a woman's life; to preserve a woman's physical health; to preserve a woman's mental health; in case of rape or incest; because of foetal impairment
prohibit female genital mutilation? ⁶²	No

Age of Consent

▲ also p.5 & 8



What is the minimum legal age for marriage without parental consent?⁴³

21 years
21 years



What is the legal age for HIV testing without parental consent?⁴⁴

16 years



What is the legal age for accessing contraceptives?⁴⁵



What is the legal age for consent to sexual intercourse?⁴⁶

16 years
14 years

Stigma faced by people living with HIV

People living with HIV often face stigma and discrimination. A non-supportive environment can drive people living with HIV away from SRHR and HIV prevention, treatment, care and support services, hindering the AIDS response.

Percentage of general population reporting discriminatory attitudes to HIV⁴⁷

13.2%

Has the Stigma Index been conducted?⁴⁸



2014⁴⁹

A sample of 1213 PLHIV (women n=880 and men n=333)



Key findings from the Stigma Index

Denied sexual and reproductive health (SRH) services	9% (n=108)
Denied family planning services	4% (n=53)
Experienced forced or coerced sterilization by healthcare provider on the basis of HIV	2% (n=29)
Ever counselled about reproductive options since being diagnosed HIV-positive	Men: 51% (n=164) Women: 57% (n=487)
Could access ART (among people yet to commence)	92% (n=1065)
Had a constructive discussion on HIV treatment options	DATA NOT AVAILABLE



Reported experience of stigma and discrimination that hinder access to HIV and SRH services
Sought redress if rights violated

28% (n=33)

DATA NOT AVAILABLE

DATA NOT AVAILABLE

Women's empowerment

Achieving gender equality and empowering women (Sustainable Development Goal 5) is essential in its own right and also affects health status. It is a broad agenda that includes: ending stigma and discrimination, violence, and harmful practices; ensuring autonomy in health decisions; and accessing SRHR and equal rights to economic resources.⁵⁰

Ability to participate in decisions regarding their own health^{50a}

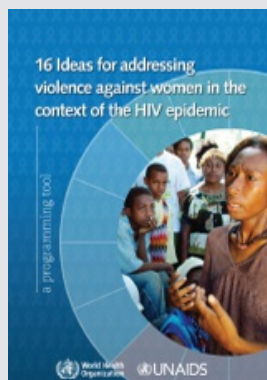


Women who believe wife is justified in refusing sex with husband^{50b}



DATA NOT AVAILABLE

Gender-based violence



Intimate partner violence has been shown to increase the risk of HIV infection by around 50%. Violence, and the fear of violence, may deter women and girls from seeking HIV testing, disclosing HIV-positive status, and seeking other services for their HIV and SRHR needs.⁵¹ Visit <http://bit.ly/1PIpTip>

Prevalence of recent intimate partner violence⁵²



29%

Gender-based violence is a cause and consequence of HIV

Girls married before 18⁵³



Women who agree husband is justified in hitting or beating his wife:



for at least one specified reason^{53a}

DATA NOT AVAILABLE

if she refuses sex with him^{53b}

DATA NOT AVAILABLE

Intimate partner violence prevention programmes⁵⁴

In-school education on preventing dating violence

Larger scale

Microfinance and gender equity training

Larger scale

Changing social and cultural norms that support violence

Larger scale

Children and Social Protection

Orphanhood is frequently accompanied by prejudice and increased poverty, factors that can jeopardize children's chances of completing school education and may lead to increased vulnerability to HIV and poor SRHR outcomes. As such, economic support (with a focus on social assistance and livelihoods assistance) to poor and HIV-affected households remains a high priority in many comprehensive care and support programmes.⁵⁵

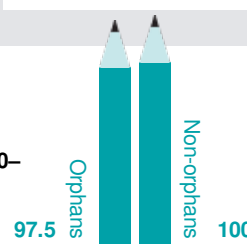
Children whose households received external support⁵⁶

26.0%



AIDS deaths in adults occur just at the time in their lives when they are forming families and bringing up children.

Ratio of school attendance of orphans to non-orphans (aged 10–14 years)⁵⁷



Children who have lost one or both parents due to AIDS⁵⁸

67,000



Health systems

Integrating SRHR and HIV services requires addressing components of health systems.

These include coordination, joint partnerships, planning and budgeting, human

resources, procurement and supply chain management, and monitoring and evaluation.

Human resources

Doctors per
1,000⁵⁹



Nurses and
midwives per
1,000⁶⁰



Community and traditional
health workers per 1,000⁶¹



Training and supervision

Are there SRHR training materials and curricular
that include HIV?⁶²

DATA NOT
AVAILABLE

Are there HIV training materials and curricula
that include SRHR?⁶³

DATA NOT
AVAILABLE

To what extent is supportive supervision for
SRHR and HIV integrated at the health service-
delivery level?⁶⁴

DATA NOT
AVAILABLE

Is there a tool for integrated supervision
available?⁶⁵

DATA NOT
AVAILABLE

Logistics and supplies

HIV and SRHR commodities

Are there integrated supply systems?⁶⁶

DATA NOT
AVAILABLE

Are there integrated ordering systems?⁶⁷

DATA NOT
AVAILABLE

Are there integrated monitoring systems?⁶⁸

DATA NOT
AVAILABLE

Commodity stockouts



Contraceptives⁶⁹

DATA NOT
AVAILABLE



Antiretrovirals for HIV⁷⁰

DATA NOT
AVAILABLE



STI drugs⁷¹

DATA NOT
AVAILABLE

Coordination, planning and budgeting

Is there joint planning of HIV and SRHR programmes?⁷² No

Is there any collaboration between SRHR and HIV for programme
management/implementation?⁷³ No

Health information systems⁷⁴

Health system statistical capacity



National surveys



Facility-based data
collection

SRHR and HIV service coverage

HIV testing and counselling facilities per
100,000 adult population⁷⁵

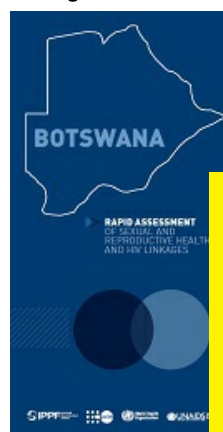


Primary level service delivery points offering
at least three modern methods of
contraception⁷⁶

DATA NOT
AVAILABLE

Rapid Assessment of SRH and HIV linkages⁷⁷

Has the Rapid Assessment for Sexual and Reproductive Health and HIV
Linkages been conducted?⁷⁸



2008

A rapid assessment of SRH and
HIV linkages is a useful tool for
countries to assess existing bi-
directional linkages at the policy,
systems and service-delivery
levels.



Integrated service delivery

Providing integrated services enables clients to receive as many quality services as possible at the same time and in the same place, especially at the primary healthcare level. This can happen through government, civil society, and private providers.

Integrated service provision

Health facilities provide HIV services integrated with other health services

HIV counselling and testing with SRH⁷⁹

Many



EMTCT with antenatal care/maternal and child health⁸⁰

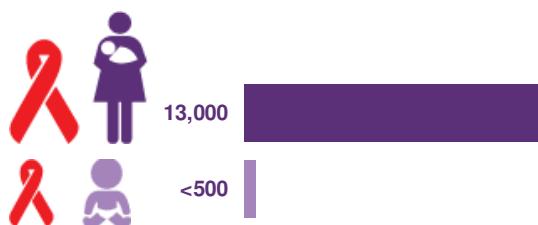
Many



Elimination of mother-to-child transmission of HIV (EMTCT)

Eliminating new HIV infections among children and keeping their mothers alive is based on a four-pronged strategy.⁸¹

Women living with HIV delivering⁸²

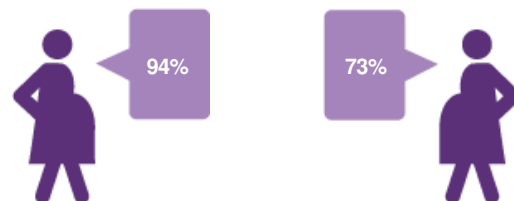


New child HIV infections⁸³

Pregnant women attending an antenatal care clinic

at least once⁸⁴

at least 4 times⁸⁵



whose sexual partners were tested for HIV in the last 12 months⁸⁶



Indicators for elimination of mother-to-child transmission of HIV

Prong 1: new HIV infections among women 15-49 ⁸⁷	6,700
Prong 2: unmet need for family planning for women of reproductive age ⁸⁸	17.1%
Prong 3: final mother-to-child HIV transmission rate ⁸⁹	1.6%
Prong 3: women receiving antiretrovirals (ARVs – excluding single dose nevirapine) to prevent new infections among children ⁹⁰	96%
Prong 3: women or infants receiving ARVs during breastfeeding ⁹¹	59%
Prong 4: ART coverage among children under 15 years ⁹²	53.0%

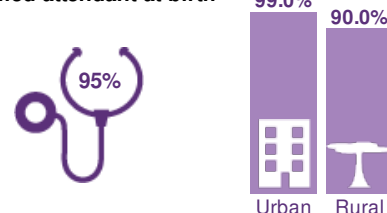
Demand for family planning satisfied with a modern method of contraception for women living with HIV (15-49)⁹⁵



Pregnant women who know their HIV status⁹³

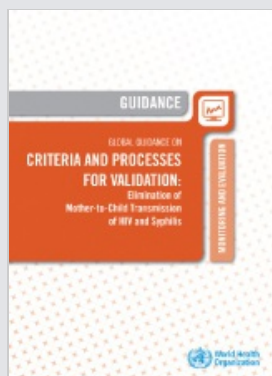


Skilled attendant at birth⁹⁴



Dual elimination of mother-to-child transmission of HIV and syphilis

In 2007 WHO launched an initiative for the global elimination of congenital syphilis, outlined in the global elimination of congenital syphilis: rationale and strategy for action.⁹⁶ Initiatives are now ongoing for dual elimination of mother-to-child transmission of HIV and syphilis as an integrated process, including data validation.⁹⁷



Elimination of mother-to-child transmission of syphilis

Congenital syphilis rate (per 100,000 live births) ⁹⁸	DATA NOT AVAILABLE
Antenatal care attendees tested for syphilis at first antenatal care visit ⁹⁹	DATA NOT AVAILABLE
Antenatal care attendees who test positive for syphilis ¹⁰⁰	1.3%
Antenatal care attendees positive for syphilis who are treated appropriately ¹⁰¹	100%

<http://bit.ly/1jCx7sf>

Focus on adolescents and youth

Young people need access to a range of SRHR and HIV information and services on a broad range of topics related to their physical, social, emotional, and sexual development.

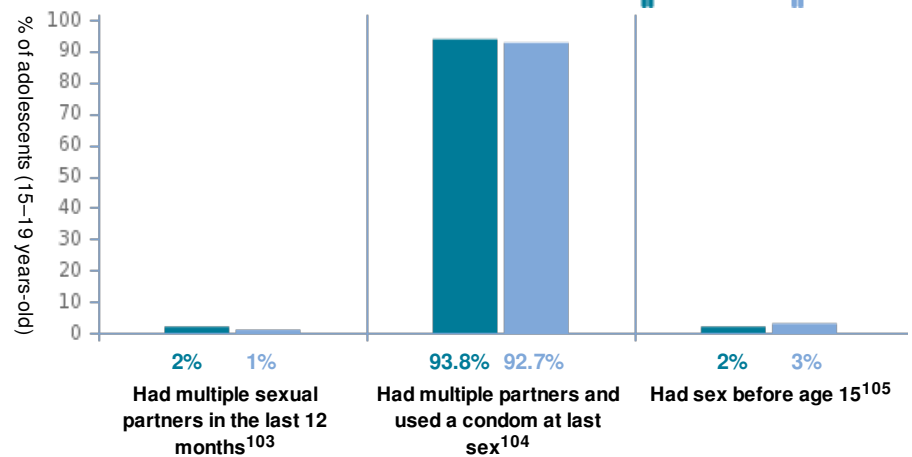
Young people, including those living with HIV and from key populations, need access to comprehensive services and a supportive legal framework.

Sexual behaviour

Median age at first sex among young people aged 20-24¹⁰²



Adolescents aged 15-19 who had:



Youth unemployment¹⁰⁹

Unmet need for family planning, among young women aged 15-19¹⁰⁶



Young women aged 15-19 who have ever had a child¹⁰⁷



Recent births to mothers under 20 that were unplanned¹⁰⁸



Young women aged 15-19 able to participate in decisions about their healthcare^{108a}



33.9%



HIV

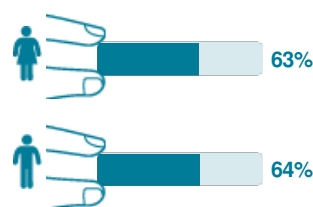
Estimated number of adolescents living with HIV aged 10-19¹¹⁰



Young people living with HIV aged 15-24¹¹¹



Adolescents aged 15-19 who were ever tested for HIV and received the results¹¹²



1,300

New HIV infections among adolescents aged 15-19¹¹³



<500

AIDS deaths among adolescents aged 10-19¹¹⁴

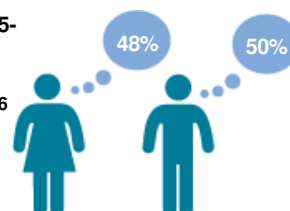
Knowledge and comprehensive sexuality education

▲ also p.4

Young people aged 15-19 who have heard of family planning on any of the three sources (radio, TV or newspapers)¹¹⁵



Adolescents aged 15-19 who have comprehensive knowledge of HIV¹¹⁶



Schools that provided skills-based HIV and sexuality education in the previous academic year¹¹⁷



Focus on key populations

Key populations, including men who have sex with men, people who use drugs, sex workers and transgender people typically have higher HIV prevalence than the general population. The criminalization of key populations drives people away from health services, increasing vulnerability to negative SRHR and HIV outcomes, as well as to stigma, discrimination, and violence.

Key populations are often not reached with health services, including for SRHR and HIV, and frequently experience violation of their human rights.

▲ also p.4



Population size estimate

781¹¹⁸



4,000¹²⁰



HIV prevalence

13.1%¹²²



61.9%¹²⁴



HIV testing

79.6%¹²⁶



54.8%¹²⁸



Condom use

84.2%¹³⁰



90.1%¹³²

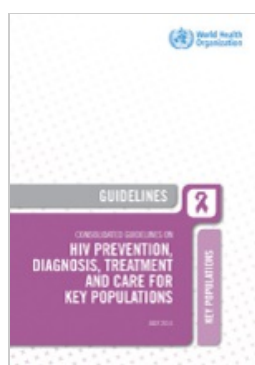


Useful programme implementation tools* and guidelines



World Health Organization (2013) *Implementing comprehensive HIV/STI programmes with sex workers: practical approaches from collaborative interventions*.

<http://bit.ly/1ISZWVz>



World Health Organization (2014) *Consolidated guidelines on HIV prevention, diagnosis, treatment and care for key populations*.

<http://bit.ly/1rhtlgZ>



UNFPA et al. (2015) *Implementing comprehensive HIV and STI programmes with men who have sex with men*.

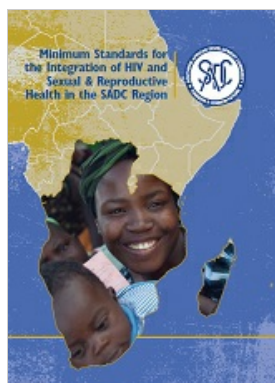
<http://bit.ly/1LWYfQ6>

*Similar implementation tools for HIV/STI programming with other key populations are currently under development.

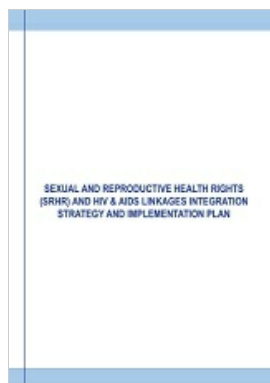
Additional regional and national data

This infographic snapshot builds on an overarching framework defining HIV and SRHR linkages/ integration and provides related national data. Specific aspects of HIV and SRHR linkages/ integration vary by region and country due to different types of HIV epidemics and structural drivers of HIV and SRHR. Therefore, a differentiated approach to investment and programming is required.

Select national/regional documents on SRHR and HIV linkages/integration



Minimum Standards for the Integration of HIV and Sexual & Reproductive Health in the SADC Region
Southern African Development Community, 2015
bit.ly/1WygT3Z



Botswana SRHR and HIV Linkages Integration Strategy and Implementation Plan
Ministry of Health Botswana, 2014
<http://bit.ly/2en1zXc>



The suggested way forward

1. **Disseminate the snapshot broadly** to key decision-makers in the government (e.g. Ministry of Health and National AIDS Commission), programme managers, donors, UN agencies, civil society organisations and community-based organisations, and use for advocacy at key events.
2. **Review the data** presented in the snapshot with key HIV and SRHR stakeholders to identify and discuss areas where further work is particularly needed.
3. **Convene a technical working group** with HIV and SRHR stakeholders to jointly plan, coordinate activities and monitor progress on HIV and SRHR linkages/integration.
4. **Work with the Ministries of Justice, Education and Health, and other appropriate sectors** to eliminate human rights violations, such as gender-based violence, early and forced marriage and stigma and discrimination.
5. **Use the snapshot** when developing and evaluating strategies, operational plans and funding proposals.
6. **Collaborate with relevant data collection entities** to fill gaps where data are not available.

Endnotes

1. GNP+, ICW, IPPF, UNAIDS, UNFPA, WHO and Young Positives (2009). Rapid Assessment Tool for Sexual and Reproductive Health and HIV Linkages: a generic guide. <http://srhhivlinkages.org/rapidassessment-tool/>
2. WHO, UNAIDS, UNFPA, IPPF (2008). Gateways to integration: a case study series. <http://www.srhhivlinkages.org>
3. UNAIDS (2010) 26th Meeting of UNAIDS Programme Coordinating Board, Background Paper: Sexual and Reproductive Health (SRH) services with HIV interventions in practice, paragraph 4 (page 5). http://srhhivlinkages.org/wp-content/uploads/2013/04/26thpcbthematicbackground_2010_en.pdf
- 3a. Data used in the HIV and SRHR Linkages Infographic Snapshot is the most recent data available.
4. UNFPA, WHO, IPPF (2012). Connecting sexual and reproductive health and HIV: Navigating the work in progress. http://www.srhhivlinkages.org/wp-content/uploads/LAWG_SRHHIVlinkages_summary1.pdf
- 4a. 2014. World Bank. <http://data.worldbank.org/indicator/>
- 4b. 2014. World Bank. <http://data.worldbank.org/indicator/> Modelled data based on 2011 census data
- 4c. 2014. World Bank. <http://data.worldbank.org/indicator/> Modelled data based on 2011 census data
5. Women of reproductive age is women aged 15–49. <http://www.who.int/mediacentre/factsheets/fs310/en/>. Lozano R, Naghavi M, Foreman K, et al. (2012) Global and regional mortality from 235 causes of death for 20 age groups in 1990 and 2010: a systematic analysis for the Global Burden of Disease Study 2010. *The Lancet*, 380(9859):2095-128.
6. 2014. UNAIDS 2014 estimates
7. 2014. UNAIDS 2014 estimates
8. 2014. UNAIDS 2014 estimates
9. 2014. UNAIDS 2014 estimates
10. 2014. UNAIDS 2014 estimates
11. 2013. BIAS IV
12. Lozano R, Naghavi M, Foreman K, et al. (2012). Global and regional mortality from 235 causes of death for 20 age groups in 1990 and 2010: a systematic analysis for the Global Burden of Disease Study 2010. *The Lancet*, 380(9859):2095-128.; AU (2012) Status Report on Maternal, Newborn, and Child Health. (African Union); WHO UNICEF, UNFPA, WB (2012) Trends in Maternal Mortality 1990-2010 (Geneva, WHO).
13. 2014. MMR - Botswana Maternal Mortality Ratio 2010-2014 page 2
14. 2015. WHO, UNICEF, UNFPA, World Bank Group and the United Nations Population Division, The Maternal Mortality Estimation Inter-Agency Group (MMEIG). Trends in Maternal Mortality: 1990 to 2015. http://apps.who.int/iris/bitstream/10665/194254/1/9789241565141_eng.pdf?ua=1
15. UN Commission on Status of Women (2013). Agreed conclusions on the elimination and prevention of all forms of violence against women and girls. New York, UN CSW.
16. 2012. GBV Indicator Study
17. <http://www.aidsinfo.nih.gov/guidelines/html/3/perinatalguidelines/162>.
18. 2015. Ministry of Health 2015 PMTCT programme data. Republic of Botswana.
19. 2014. Republic of Botswana. Progress Report of the National Response to the 2011 Declaration of Commitments on HIV and AIDS. Reporting Period: 2014. http://www.unaids.org/sites/default/files/country/documents/BWA_narrative_report_2015.pdf
20. 2014. United Nations, Department of Economic and Social Affairs, Population Division (2014). Model-based Estimates and Projections of Family Planning Indicators 2014. New York: United Nations. http://www.un.org/en/development/desa/population/publications/dataset/contraception/data/Table_Model-based_estimates_Countries_Run20140520.xls
21. Indicator: Percentage of total demand for family planning among married or in-union women living with HIV aged 15 to 49 that is satisfied with modern methods (modern contraceptive prevalence divided by total demand for family planning)
22. WHO (2007). Global Strategy for the Prevention and control of sexually transmitted infections 2006-2015, Breaking the Chain of Transmission. Geneva, WHO.
23. Indicator: Number of adults reported with syphilis in the past 12 months. WHO Universal Access Indicator 1.17.6
24. 2013. Republic of Botswana. Botswana 2013 Global Aids Response Report. Progress Report of the National Response to the 2011 Declaration of Commitments on HIV and AIDS. http://www.unaids.org/sites/default/files/country/documents/BWA_narrative_report_2014.pdf
25. 2010-2016. The Second Botswana National Strategic Framework for HIV & AIDS 2010-2016. http://www.ilo.org/wcmsp5/groups/public/---ed_protect/---protrav/---ilo_aids/documents/legaldocument/wcms_172465.pdf
- 25a. 2015. IPPF and UNFPA coding
26. 2013. Government of Botswana and the UNDP (2013) MDG acceleration compact: improving maternal health
- 26a. 2015. IPPF and UNFPA coding
27. 2012. Department of HIV and AIDS Prevention and Care (2012). Sexual and Reproductive Health Rights (SRHR) and HIV & AIDS Linkages Integration Strategy and Implementation Plan. <http://countryoffice.unfpa.org/botswana/drive/SRHRandHIV&AIDSLinkagesIntegrationStrategy.pdf>
28. 2014. UNAIDS (2014) GARPR
- 28a. Global Commission on HIV and the Law (2012). Risks, Rights and Health. Final Report July 2012, at p9 and p25. <http://www.hivlawcommission.org/index.php/report>; Ending overly broad criminalization of HIV non-disclosure, exposure and transmission: Critical scientific, medical and legal considerations. Guidance Note. http://www.unaids.org/sites/default/files/media_asset/20130530_Guidance_Ending_Criminalisation_0.pdf
29. 2014. UNAIDS (2014) GARPR
- 29a. Global Commission on HIV and the Law (2012). Risks, Rights and Health. Final Report July 2012, at p10 and p61. <http://www.hivlawcommission.org/index.php/report>
30. 2014. <http://criminalisation.gnpplus.net/country/botswana>
- 30a. Global Commission on HIV and the Law (2012). Risks, Rights and Health. Final Report July 2012, at p9 and p50. <http://www.hivlawcommission.org/index.php/report>; The Lancet (2012). HIV in Men Who Have Sex with Men. <http://www.thelancet.com/series/hivin-men-who-have-sex-with-men>
31. 2014. UNAIDS (2014) GARPR
- 31a. Global Commission on HIV and the Law (2012). Risks, Rights and Health. Final Report July 2012, at p9 and p50. <http://www.hivlawcommission.org/index.php/report>; The Lancet (2012). HIV in Men Who Have Sex with Men. <http://www.thelancet.com/series/hivin-men-who-have-sex-with-men>
32. 2014. UNAIDS (2014) GARPR
- 32a. Global Commission on HIV and the Law (2012). Risks, Rights and Health. Final Report July 2012, at p9 and p43. <http://www.hivlawcommission.org/index.php/report>; UNAIDS (2012). UNAIDS Guidance Note on HIV and Sex Work. 2012 Update. http://www.unaids.org/sites/default/files/media_asset/JC2306_UNAIDS-guidance-note-HIV-sex-work_en_0.pdf; The Lancet (2014). HIV and sex workers. <http://www.thelancet.com/series/hiv-and-sex-workers>
33. 2014. UNAIDS (2014) GARPR
- 33a. 6(2); ECOSOC (25 May 1984) Implementation of the safeguards guaranteeing protection of the rights of those facing the death penalty, Resolution 1984/50; United Nations Information Centre. INCB encourages States to consider the abolition of the death penalty for drug-related offences, 5 March 2014. http://www.incb.org/documents/Publications/PressRelease/PR2014/press_release_050314.pdf
34. 2009. UNAIDS (2014) GARPR
- 34a. Global Commission on HIV and the Law (2012). Risks, Rights and Health. Final Report July 2012, at p10 and p35. <http://www.hivlawcommission.org/index.php/report>; United Nations. 2012. Joint statement on compulsory drug detention and rehabilitation centres. http://www.unaids.org/sites/default/files/en/media/unaids/contentassets/documents/document/2012/JC2310_Joint%20Statement6March12FINAL_en.pdf

35. 2014. 2014. Identities.Mic. "7 Countries Giving Transgender People Fundamental Rights the U.S. Still Won't". <http://mic.com/articles/87149/7-countries-giving-transgender-people-fundamentalrights-the-u-s-still-won-t> Accessed June 2015
- 35a. Global Commission on HIV and the Law (2012). Risks, Rights and Health. Final Report July 2012, at p10, p50 and p54. <http://www.hivlawcommission.org/index.php/report>
36. 2012. The Domestic Violence and Matrimonial Causes Acts, and the abolition of the Marital Powers Act allowed Botswana to make progress in addressing existing gender inequality especially in regard to the legal environment. Republic of Botswana. Botswana 2013 Global Aids Response Report. Progress Report of the National Response to the 2011 Declaration of Commitments on HIV and AIDS. http://www.unaids.org/sites/default/files/country/documents/BWA_narrative_report_2014.pdf
- 36a. Convention on the Elimination of Discrimination against Women. General Recommendation No. 19 (11th session, 1992). Violence against women, paras 1, 7 and 24(b). <http://www.un.org/womenwatch/daw/cedaw/recommendations/recomm.htm>
37. 2014. WHO (2014) Global Status Report on Violence Prevention http://www.who.int/violence_injury_prevention/violence/status_report/2014/en/
- 37a. Global Commission on HIV and the Law (2012). Risks, Rights and Health. Final Report July 2012, at p9 and p69. <http://www.hivlawcommission.org/index.php/report>
38. 2014. WHO (2014) Global Status Report on Violence Prevention http://www.who.int/violence_injury_prevention/violence/status_report/2014/en/
- 38a. Convention on the Elimination of Discrimination against Women. General Recommendation No. 21 (13th session, 1994). Equality in marriage and family relations. <http://www.un.org/womenwatch/daw/cedaw/recommendations/recomm.htm>
39. 2014. WHO (2014) Global Status Report on Violence Prevention http://www.who.int/violence_injury_prevention/violence/status_report/2014/en/
- 39a. Convention on the Elimination of Discrimination against Women. General Recommendation No. 19 (11th session, 1992) Violence against women, paras 23 and 24(b). <http://www.un.org/womenwatch/daw/cedaw/recommendations/recomm.htm>
40. Indicator: Is there a law or policy mandating the government (or its regulatory bodies) to implement sexuality education?
41. 2013. United Nations, World Population Policies Database. http://esa.un.org/poppolicy/about_database.aspx
42. 2014. WHO (2014) Global Status Report on Violence Prevention http://www.who.int/violence_injury_prevention/violence/status_report/2014/en/
43. 2014. WHO (2014) Global Status Report on Violence Prevention http://www.who.int/violence_injury_prevention/violence/status_report/2014/en/
44. 2013. National Guidelines HIV Testing and Counselling - page 9. World Health Organization (2013). HIV and adolescents: guidance for HIV testing and counselling and care for adolescents living with HIV. Annex 15: Adolescent consent to testing: a review of current policies and issues in sub-Saharan Africa. http://apps.who.int/iris/bitstream/10665/95147/1/WHO_HIV_2013.141_eng.pdf
45. Indicator: Legal age for accessing contraceptives.
46. 2001. <http://www.ageofconsent.com/ageofconsent.htm>
47. 2014. UNAIDS GARPR
48. People Living with HIV Stigma Index. IPPF, GNP+, ICW, UNAIDS, 2008. <http://www.stigmaindex.org/>
49. 2014. Stigma Index Survey Report: Botswana. Botswana Network of People Living With HIV & AIDS (BONEPWA+), NACA, Ministry of Health, UNAIDS and UNDP.
50. UN (2015) Sustainable Development Goals. <https://sustainabledevelopment.un.org/?menu=1300>
- 50a. Indicator: Ability to participate in decisions regarding their own health
- 50b. Indicator: Ability to participate in decisions regarding their own health
51. WHO and UNAIDS (2013) 16 ideas for addressing violence against women in the context of HIV epidemic: a programming tool. http://apps.who.int/iris/bitstream/10665/95156/1/9789241506533_eng.pdf
52. 2012. GBV Indicator Study
53. 2005-2013. UNICEF State of The World's Children 2015 Country Statistical Information http://www.unicef.org/statistics/index_countrystats.html
- 53a. "The percentage of women age 15-49 who agree that a husband is justified in hitting or beating his wife if she refuses to have sexual intercourse with him"
- 53b. "The percentage of women age 15-49 who agree that a husband is justified in hitting or beating his wife for one specified reason: if she burns the food, if she argues with him, if she goes out without telling him, if she neglects the children, and if she refuses to have sexual intercourse with him."
54. 2012. WHO (2014) Global Status Report on Violence Prevention http://www.who.int/violence_injury_prevention/violence/status_report/2014/en/
55. UNAIDS (2014). Global AIDS response progress reporting 2014: construction of core indicators for monitoring the 2011 UN political declaration on HIV/AIDS.
56. 2010-2014. Based on DHS, MICS and other national surveys. Available from <http://www.childrenandaids.org/>
57. 2013. UNAIDS GARPR
58. 2014. UNAIDS 2014 estimates
59. 2009. World Health Organization. <http://apps.who.int/gho/data/view.main.92100>
60. 2009. World Health Organisation <http://apps.who.int/gho/data/view.main.92100>
61. 2009. World Health Organisation <http://apps.who.int/gho/data/view.main.92100>
62. Indicator: Are there any SRH training materials and curricula on SRH which include HIV prevention, treatment and care?
63. Indicator: Are there any HIV training materials and curricula which include SRH?
64. Indicator: To what extent is supportive supervision for SRH and HIV integrated at the health service-delivery level?
65. Indicator: Is there a tool for integrated supervision available?
66. Indicator: Are there integrated supply systems?
67. Indicator: Are there integrated ordering systems
68. Indicator: Are there integrated monitoring systems?
69. Indicator: Percentage of facilities stocked-out of contraceptives
70. Indicator: Percentage of health facilities dispensing ARVs that experienced stock-out of at least one required ARV in the last 12 months. WHO Universal Access
71. Indicator: Proportion of primary healthcare public sector facilities that reported having any one of five drugs considered essential for STI management out of stock during the month of the survey (metronidazole, ciprofloxacin, erythromycin, doxycycline, benzathine-penicillin)
72. 2008. IPPF, UNAIDS, UNFPA, WHO (2011). Rapid assessment of sexual and reproductive health and HIV linkages: Botswana. http://srhhivlinkages.org/wp-content/uploads/2013/04/rasbotswana_2011_web_en.pdf
73. 2008. IPPF, UNAIDS, UNFPA, WHO (2011). Rapid assessment of sexual and reproductive health and HIV linkages: Botswana. http://srhhivlinkages.org/wp-content/uploads/2013/04/rasbotswana_2011_web_en.pdf
74. World Bank, WDI. Statistical Capacity Index <http://databank.worldbank.org/data/reports.aspx?source=Statistical-capacity-indicators#>
75. 2014. WHO Global Health Observatory Data Repository. Testing and counselling facilities, data by country <http://apps.who.int/gho/data/node.main.625TC?lang=en>
76. 2013. Indicator: Primary level service delivery points offering at least three modern methods of contraception
77. GNP+, ICW, IPPF, UNAIDS, UNFPA, WHO and Young Positives (2009). Rapid Assessment Tool for Sexual and Reproductive Health and HIV Linkages: a generic guide. <http://srhhivlinkages.org/rapidassessment-tool/>
78. 2011. IPPF, UNAIDS, UNFPA, WHO (2011). Rapid assessment of sexual and reproductive health and HIV linkages: Botswana. http://srhhivlinkages.org/wp-content/uploads/2013/04/rasbotswana_2011_web_en.pdf
79. 2014. National Commitments and Policy Instrument (GARPR).
80. 2014. National Commitments and Policy Instrument (GARPR).

81. UNAIDS (2011). Countdown to zero. Global plan for the elimination of new HIV infections among children by 2015 and keeping their mothers alive. http://www.unaids.org/en/media/unaids/contentassets/documents/unaidspublication/2011/20110609_JC2137_Global-Plan-Elimination-HIV-Children_en.pdf
82. 2014. UNAIDS 2014 estimates
83. 2014. UNAIDS 2014 estimates
84. 2007. Botswana Family Health Survey IV Report 2007– from UNICEF 2015 – <http://data.unicef.org/maternal-health/antenatal-care.html> - Antenatal care coverage - at least one visit with skilled health personnel.
85. 2007. Botswana Family Health Survey IV Report 2007– from UNICEF 2015 – <http://data.unicef.org/maternal-health/antenatal-care.html> - AAntenatal care coverage - at least four visits.
86. 2014. Republic of Botswana. Progress Report of the National Response to the 2011 Declaration of Commitments on HIV and AIDS. Reporting Period: 2014. http://www.unaids.org/sites/default/files/country/documents/BWA_narrative_report_2015.pdf
87. 2014. UNAIDS 2014 estimates
88. 2014. 2014. United Nations, Department of Economic and Social Affairs, Population Division (2014). Model-based Estimates and Projections of Family Planning Indicators 2014. New York: United Nations. http://www.un.org/en/development/desa/population/publications/dataset/contraception/data/Table_Model-based_estimates_Countries_Run20140520.xls
89. 2015. Ministry of Health 2015 PMTCT programme data. Republic of Botswana.
90. 2015. Ministry of Health 2015 PMTCT programme data. Republic of Botswana.
91. 2014. UNAIDS 2014 estimates
92. 2014. UNAIDS 2014 estimates
93. 2014. Republic of Botswana. Progress Report of the National Response to the 2011 Declaration of Commitments on HIV and AIDS. Reporting Period: 2014. http://www.unaids.org/sites/default/files/country/documents/BWA_narrative_report_2015.pdf
94. 2007. Botswana Family Health Survey IV Report 2007 – from UNICEF 2015 – <http://data.unicef.org/maternal-health/delivery-care.html> - Skilled attendance at birth - Percentage
95. Data not available
96. WHO (2007). Global elimination of congenital syphilis: rationale and strategy for action. <http://www.who.int/reproductivehealth/publications/rtis/9789241595858/en/>
97. WHO (2014). Global guidance on criteria and processes for validation: elimination of mother-to-child transmission (EMTCT) of HIV and syphilis. <http://www.who.int/reproductivehealth/publications/rtis/9789241505888/en/>
98. Indicator: Congenital syphilis rate per 100,000 live births. WHO Global Health Observatory data repository. Congenital syphilis. <http://apps.who.int/gho/data/view.main.CONGENITALSYFSTIV>
99. 2013. Indicator: Percentage of women accessing antenatal care services who were tested for syphilis at first antenatal care visit. WHO Global Health Observatory data repository. Antenatal care (ANC) attendees tested for syphilis at first ANC visit. <http://apps.who.int/gho/data/view.main.23610>
100. 2011. Data from ANC sentinel surveillance, 2011
101. 2011. Data from ANC sentinel surveillance, 2011
102. Indicator: Median age at first sexual intercourse: Women 20-24
103. 2010-2014. Data refer to most recent year available. UNICEF global databases, 2014, based on DHS, MICS and other national surveys, 2006–2014. Available from <http://www.childrenandaids.org/>
104. 2013. BIAS IV
105. 2010-2014. Data refer to most recent year available. UNICEF global databases, 2014, based on DHS, MICS and other national surveys, 2006–2014. Available from <http://www.childrenandaids.org/>
106. 2011. Indicator: Unmet need for contraception among women aged 15-49, married or in union
107. 2007. Indicator: Percentage of teenage women (age 15-19) who have begun childbearing
108. 2007. Indicator: Percent of recent births to mothers <20 that were unplanned
- 108a. 2013. Indicator: Percentage of currently married women age 15-49 who usually make specific decisions either by themselves or jointly with their husband on their own health care
109. 2014. Unemployment, youth total (percentage of total labour force ages 15–24) (modeled ILO estimate). <http://data.worldbank.org/indicator/SL.UEM.1524.ZS>
110. 2014. UNAIDS 2014 estimates
111. 2014. UNAIDS 2014 estimates
112. 2013. BIAS IV
113. 2014. UNAIDS 2014 estimates
114. 2014. UNAIDS 2014 estimates
115. 2007. Indicator: % of women aged 15–19 who have heard of family planning on any of three sources (radio, television or newspaper)
116. 2013. BIAS IV
117. Indicator: Percentage of schools that provided life skills-based HIV and sexuality education in the previous academic year.
118. 2013. UNAIDS GARPR
119. Indicator: People who inject drugs population size estimate. UNAIDS GARPR
120. 2014. UNAIDS GARPR
121. Indicator: Transgender people population size estimate
122. 2013. UNAIDS GARPR
123. Indicator: Percentage of people who inject drugs who are living with HIV. UNAIDS GARPR
124. 2013. UNAIDS GARPR
125. Indicator: Percentage of transgender people who are living with HIV.
126. 2013. UNAIDS GARPR
127. Indicator: Percentage of people who inject drugs who received an HIV test in the past 12 months and know their results. UNAIDS GARPR
128. 2013. UNAIDS GARPR
129. Indicator: Percentage of transgender people who received an HIV test in the past 12 months and know their results.
130. 2013. UNAIDS GARPR
131. Indicator: Percentage of people who inject drugs reporting the use of a condom the last time they had sexual intercourse. UNAIDS GARPR
132. 2013. UNAIDS GARPR
133. Indicator: Percentage of transgender people reporting the use of a condom the last time they had sexual intercourse

Inter-Agency Working Group on SRH and HIV Linkages

The Inter-agency Working Group on Sexual and Reproductive Health (SRH) and HIV Linkages is convened by UNFPA, WHO, and IPPF and works with more than 20 organizations to:

- advocate for political commitment to a linked SRH and HIV agenda;
- support national action to strengthen SRH and HIV linkages at the policy, systems, and service delivery levels; and
- create a shared understanding of SRH and HIV linkages by building the evidence base and sharing research, good practice, and lessons learnt.

Key achievements since 2004



To find out more

Visit <http://srhhivlinkages.org> - a collection of SRHR and HIV linkages resources. For a list of current members of the IAWG on SRH and HIV Linkages visit <http://bit.ly/1kzQDWB>

Disclaimer: All reasonable precautions have been taken by the publishers to verify the information contained in this publication. However, the published material is being distributed without warranty of any kind, either expressed or implied. The responsibility for the interpretation and use of the material lies with the reader. In no event shall the IAWG on SRH and HIV Linkages or any organization whose logo appears on this document be liable for damages arising from use of this publication. This publication does not necessarily represent decisions the IAWG on SRH and HIV Linkages or any organization whose logo appears on this document.

