

HIV AND SRHR LINKAGES INFOGRAPHIC SNAPSHOT LEBANON 2016



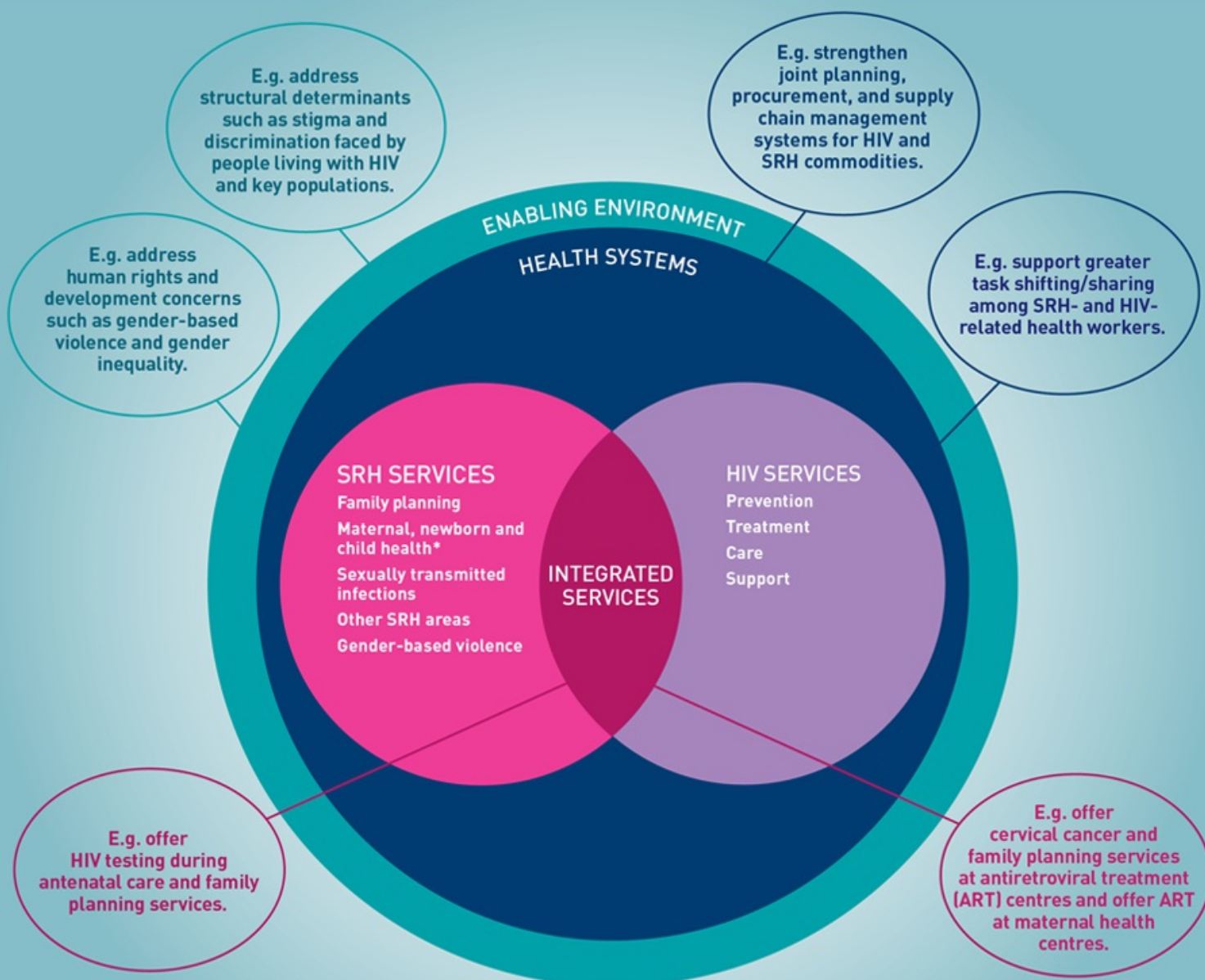
What's this
all about?

This country snapshot provides an overview of national level data for the full scope of HIV and sexual & reproductive health and rights (SRHR) linkages/integration at three levels:¹

- enabling environment (policy and legal)
- health systems
- integrated service delivery

By highlighting results, areas that need strengthening, and data gaps, this snapshot can be used for determining priorities, programme planning, and resource mobilization.

▲ also p.10



Source: Adapted from WHO, UNFPA, UNAIDS, IPPF (2005) Sexual and reproductive health and HIV/AIDS: A framework for priority linkages. http://srhhivlinkages.org/wp-content/uploads/2013/04/frameworkforprioritylinkages_2005_en.pdf

*Maternal health is an SRH service, which is often clustered with newborn and child health services.

Linkages versus integration²

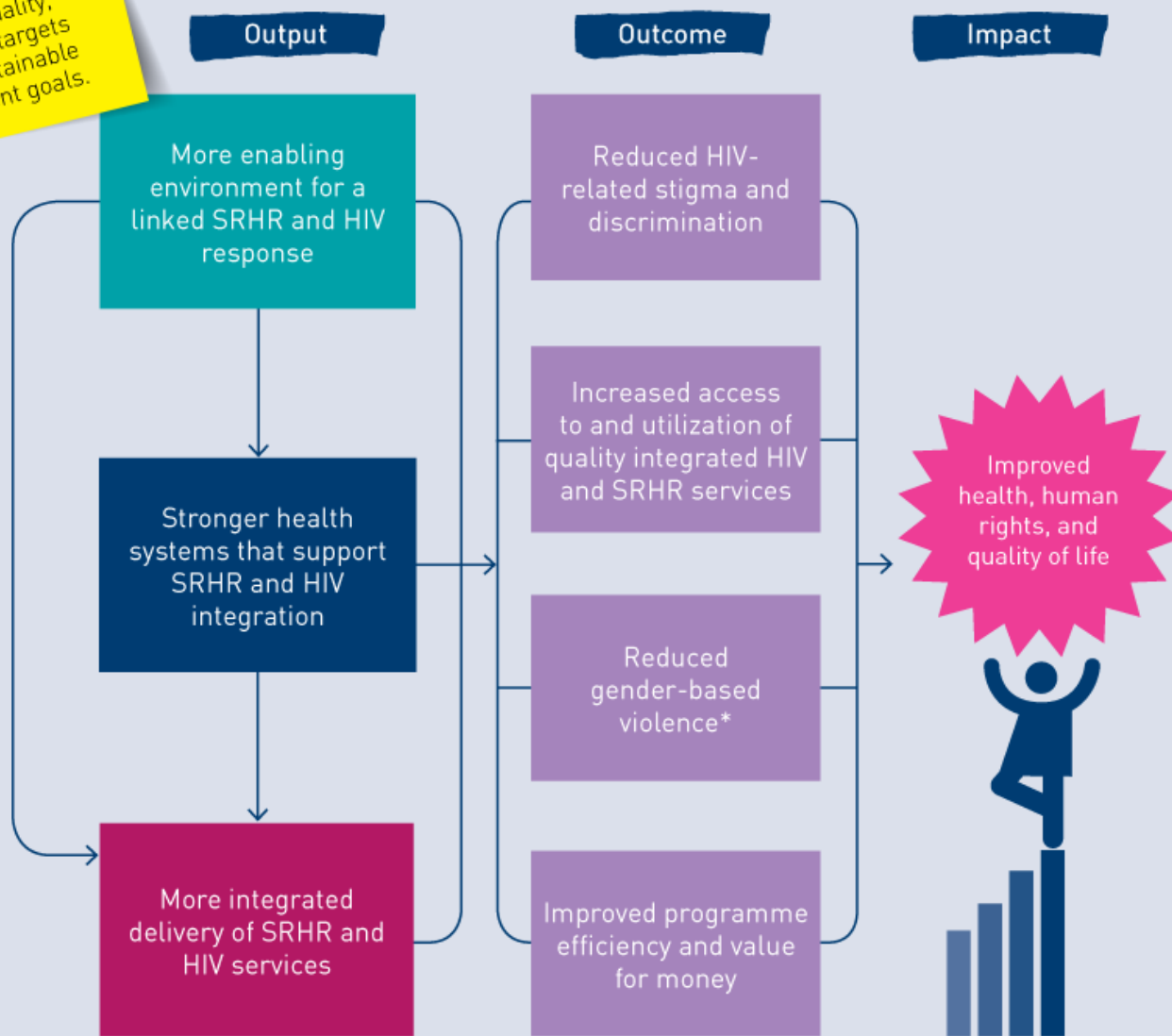
Linkages refer to bi-directional synergies in policy, systems, and services between SRH and HIV. It refers to a broader human rights-based approach, of which service integration is a subset.

Integration refers to the service delivery level and can be understood as joining operational programmes to ensure effective outcomes through many modalities (multi-tasked providers, referral, one-stop shop services under one roof, etc.).

Upholding human rights is intrinsic to the linkages agenda, in particular the human rights of people living with HIV, key populations, and women and girls.³

Linking HIV and SRHR responses is critical for reaching human rights, gender equality, and health targets for the sustainable development goals.

Theory of change for SRHR and HIV linkages



Source: Adapted from IPPF, UNFPA, WHO (2014) SRH and HIV Linkages Compendium: Indicators and Related Assessment Tools. Available at: <http://bit.ly/1KVaeT1>

* It is recognized that reducing stigma and discrimination and gender-based violence are also impact level measures and the outcome measures influence each other.



To find indicators and tools to measure progress

Visit <http://bit.ly/1KVaeT1>



To find out more about linkages/integration

Visit <http://srhhivlinkages.org> - a collection of SRHR and HIV linkages resources.

Key HIV and SRHR intersections: Lebanon data^{3a}

The intrinsic connections between HIV and SRHR are well-established, especially as HIV is predominantly sexually transmitted or associated with pregnancy, childbirth and breastfeeding.⁴



Where data is not available this is marked with

DATA NOT AVAILABLE or DATA NOT AVAILABLE

Population size 4.547 million^{4a} Life expectancy at birth 80.1^{4b} Fertility rate 1.5^{4c}

HIV is a leading cause of death in women of reproductive age (globally)⁵

New adult HIV infections⁶

<100

<200



Women



Men

HIV prevalence (ages 15-49)⁸

<0.1%

People living with HIV⁹

<200

1,600



Women



Men



Children

People living with HIV receiving ART¹⁰



40%

15 years+



87%

0-14 years



HIV testing in the general population¹¹



AIDS-related deaths among adults (ages 15+)⁷



<100



<100

HIV-associated maternal death contributes to maternal mortality¹²

Maternal mortality ratio¹³



15 per 100,000 live births

Maternal deaths attributed to HIV¹⁴



0%

Gender-based violence is a cause and consequence of HIV¹⁵
▲ also p.5 & 7

Prevalence of recent intimate partner violence¹⁶



HIV transmission to infants can occur during pregnancy, childbirth, and breastfeeding. This is more likely where there is acute maternal HIV infection.¹⁷

▲ also p.5

Mother-to-child HIV transmission rate (after breastfeeding)¹⁸



0%

Pregnant women who know their HIV status¹⁹



Demand for family planning satisfied with a modern method of contraception (15-49)²⁰



52.8%

Certain sexually transmitted infections (STIs) significantly increase the risk of acquiring and transmitting HIV²²
▲ also p.7

Male and female condoms provide triple protection from unintended pregnancies, HIV, and other STIs

Demand for family planning satisfied with a modern method of contraception for women living with HIV (15-49)²¹

Number of adults reported with syphilis²³



Condom use at last sex²⁴



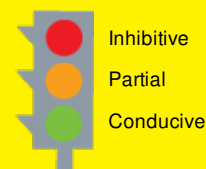
78.8%



Enabling environment (policy and legal)

SRHR and HIV strategies and policies should be interconnected to increase service provision and uptake. Effective responses also must go beyond health services to address human rights and development.

Support to SRHR and HIV linkages:



Strategies and policies

Is there a national HIV strategy?²⁵



If yes, have the following SRHR components been included as a measurable target:^{25a}

Condoms (with reference to STI prevention / contraceptive method)?	Yes
Prevention / elimination of mother-to-child transmission of HIV?	Yes
SRHR of people living with HIV?	No
Sexually transmitted infections?	Yes
Gender based violence?	Yes

Is there a national SRHR strategy?²⁶



If yes, have the following HIV components been included as a measurable target:^{26a}

Condoms (with reference to HIV prevention)?	DATA NOT AVAILABLE
Prevention / elimination of mother to child transmission of HIV?	DATA NOT AVAILABLE
SRHR of people living with HIV?	DATA NOT AVAILABLE
Sexually transmitted infections?	DATA NOT AVAILABLE
HIV counselling and testing?	DATA NOT AVAILABLE

Is there a national SRHR and HIV integration policy or strategy?²⁷



Laws

▲ also p.5

▲ also p.9

▲ also p.7

People living with HIV

Are there laws that:^{27a}

criminalise HIV transmission or exposure? ²⁸	No	28a
impose HIV specific restrictions on entry, stay or residence? ²⁹	Yes	29a
address HIV-related discrimination and protect people living with HIV? ³⁰	No	30a

Key populations

Are there laws that:^{30b}

criminalise same-sex sexual activities? ³¹	Yes	31a
deem sex work as illegal? ³²	No	32a
mandate the death penalty for drug offences? ³³	No	33a
demand compulsory detention for people who use drugs? ³⁴	No	34a
recognise a third, neutral and non-specific gender besides male and female? ³⁵	No	35a

Gender-based violence

Are there laws that:

address gender-based violence? ³⁶	Yes	36a
penalise rape in marriage? ³⁷	No	37a
allow free entry into marriage and divorce? ³⁸	DATA NOT AVAILABLE	38a
allow the removal of violent spouses? ³⁹	Yes	39a

Other laws

▲ also p.8

Are there laws that:

make sexuality education mandatory? ⁴⁰	Yes (partial)
allow legal abortion? ⁴¹	Yes: to save a woman's life
prohibit female genital mutilation? ⁴²	DATA NOT AVAILABLE

Age of Consent

▲ also p.5 & 8



What is the minimum legal age for marriage without parental consent?⁴³

18 years
15 years



What is the legal age for HIV testing without parental consent?⁴⁴

16 years



What is the legal age for accessing contraceptives?⁴⁵

No specified age



What is the legal age for consent to sexual intercourse?⁴⁶

DATA NOT AVAILABLE

Stigma faced by people living with HIV

People living with HIV often face stigma and discrimination. A non-supportive environment can drive people living with HIV away from SRHR and HIV prevention, treatment, care and support services, hindering the AIDS response.

Percentage of general population reporting discriminatory attitudes to HIV⁴⁷



Has the Stigma Index been conducted?⁴⁸



2013⁴⁹

A sample of 130 PLHIV (women 8.5%, n=11, men 82.3%, n=107 and undefined/unknown 9.2%, n=12)



Key findings from the Stigma Index

Denied sexual and reproductive health (SRH) services **3.1% (n=4)**

Denied family planning services **2.3% (n=3)**

Experienced forced or coerced sterilization by healthcare provider on the basis of HIV

DATA NOT AVAILABLE

Ever counselled about reproductive options since being diagnosed HIV-positive **56.2% (n=73)**

Could access ART (among people yet to commence)

DATA NOT AVAILABLE

Had a constructive discussion on HIV treatment options

DATA NOT AVAILABLE



Reported experience of stigma and discrimination that hinder access to HIV and SRH services

DATA NOT AVAILABLE

Sought redress if rights violated **30% (n=6)**

Women's empowerment

Achieving gender equality and empowering women (Sustainable Development Goal 5) is essential in its own right and also affects health status. It is a broad agenda that includes: ending stigma and discrimination, violence, and harmful practices; ensuring autonomy in health decisions; and accessing SRHR and equal rights to economic resources.⁵⁰

Ability to participate in decisions regarding their own health^{50a}



DATA NOT AVAILABLE



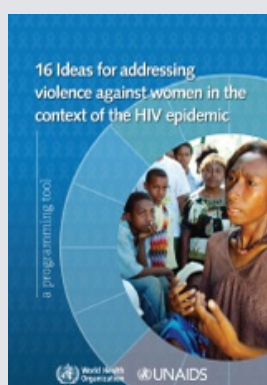
DATA NOT AVAILABLE

Women who believe wife is justified in refusing sex with husband^{50b}



DATA NOT AVAILABLE

Gender-based violence



Intimate partner violence has been shown to increase the risk of HIV infection by around 50%. Violence, and the fear of violence, may deter women and girls from seeking HIV testing, disclosing HIV-positive status, and seeking other services for their HIV and SRHR needs.⁵¹ Visit <http://bit.ly/1PIpTip>

Prevalence of recent intimate partner violence⁵²



DATA NOT AVAILABLE

Gender-based violence is a cause and consequence of HIV

Girls married before 18⁵³

6%



Women who agree husband is justified in hitting or beating his wife:



for at least one specified reason^{53a}

DATA NOT AVAILABLE

if she refuses sex with him^{53b}

DATA NOT AVAILABLE

Intimate partner violence prevention programmes⁵⁴

In-school education on preventing dating violence

DATA NOT AVAILABLE

Microfinance and gender equity training

DATA NOT AVAILABLE

Changing social and cultural norms that support violence

DATA NOT AVAILABLE

Children and Social Protection

Orphanhood is frequently accompanied by prejudice and increased poverty, factors that can jeopardize children's chances of completing school education and may lead to increased vulnerability to HIV and poor SRHR outcomes. As such, economic support (with a focus on social assistance and livelihoods assistance) to poor and HIV-affected households remains a high priority in many comprehensive care and support programmes.⁵⁵

Children whose households received external support⁵⁶

DATA NOT AVAILABLE



AIDS deaths in adults occur just at the time in their lives when they are forming families and bringing up children.

Ratio of school attendance of orphans to non-orphans (aged 10–14 years)⁵⁷

DATA NOT AVAILABLE

Children who have lost one or both parents due to AIDS⁵⁸

DATA NOT AVAILABLE



Health systems

Integrating SRHR and HIV services requires addressing components of health systems.

These include coordination, joint partnerships, planning and budgeting, human

resources, procurement and supply chain management, and monitoring and evaluation.

Human resources

Doctors per
1,000⁵⁹



Nurses and
midwives per
1,000⁶⁰



Community and traditional
health workers per 1,000⁶¹



(DATA NOT
AVAILABLE)

Training and supervision

Are there SRHR training materials and curricular that include HIV? ⁶²	Yes
Are there HIV training materials and curricula that include SRHR? ⁶³	No
To what extent is supportive supervision for SRHR and HIV integrated at the health service-delivery level? ⁶⁴	Not integrated
Is there a tool for integrated supervision available? ⁶⁵	No

Logistics and supplies

HIV and SRHR commodities

Are there integrated supply systems? ⁶⁶	Not integrated
Are there integrated ordering systems? ⁶⁷	Not integrated
Are there integrated monitoring systems? ⁶⁸	Not integrated

Commodity stockouts



Contraceptives⁶⁹

0%



Antiretrovirals for HIV⁷⁰

0%



STI drugs⁷¹

0%

Coordination, planning and budgeting

Is there joint planning of HIV and SRHR programmes?⁷² Some

Is there any collaboration between SRHR and HIV for programme management/implementation?⁷³ Some

Health information systems⁷⁴

Health system statistical capacity



National surveys



Facility-based data
collection

SRHR and HIV service coverage

HIV testing and counselling facilities per
100,000 adult population⁷⁵

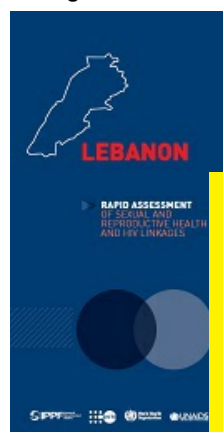


Primary level service delivery points offering
at least three modern methods of
contraception⁷⁶



Rapid Assessment of SRH and HIV linkages⁷⁷

Has the Rapid Assessment for Sexual and Reproductive Health and HIV Linkages been conducted?⁷⁸



A rapid assessment of SRH and HIV linkages is a useful tool for countries to assess existing bi-directional linkages at the policy, systems and service-delivery levels.



Integrated service delivery

Providing integrated services enables clients to receive as many quality services as possible at the same time and in the same place, especially at the primary healthcare level. This can happen through government, civil society, and private providers.

Integrated service provision

Health facilities provide HIV services integrated with other health services

HIV counselling and testing with SRH⁷⁹

Many



EMTCT with antenatal care/maternal and child health⁸⁰

Many



Elimination of mother-to-child transmission of HIV (EMTCT)

Eliminating new HIV infections among children and keeping their mothers alive is based on a four-pronged strategy.⁸¹

Women living with HIV delivering⁸²



1

New child HIV infections⁸³



0

Indicators for elimination of mother-to-child transmission of HIV

Prong 1: new HIV infections among women 15-49 ⁸⁷	<100
Prong 2: unmet need for family planning for women of reproductive age ⁸⁸	13%
Prong 3: final mother-to-child HIV transmission rate ⁸⁹	0%
Prong 3: women receiving antiretrovirals (ARVs – excluding single dose nevirapine) to prevent new infections among children ⁹⁰	43%
Prong 3: women or infants receiving ARVs during breastfeeding ⁹¹	0%
Prong 4: ART coverage among children under 15 years ⁹²	5

Demand for family planning satisfied with a modern method of contraception for women living with HIV (15-49)⁹⁵



Pregnant women attending an antenatal care clinic

at least once⁸⁴

at least 4 times⁸⁵



96%



whose sexual partners were tested for HIV in the last 12 months⁸⁶



Pregnant women who know their HIV status⁹³



Skilled attendant at birth⁹⁴



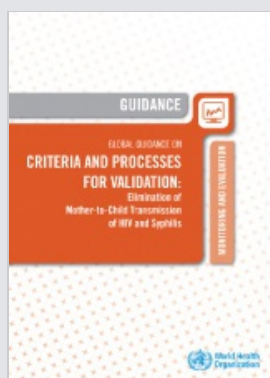
98%



Urban Rural

Dual elimination of mother-to-child transmission of HIV and syphilis

In 2007 WHO launched an initiative for the global elimination of congenital syphilis, outlined in the global elimination of congenital syphilis: rationale and strategy for action.⁹⁶ Initiatives are now ongoing for dual elimination of mother-to-child transmission of HIV and syphilis as an integrated process, including data validation.⁹⁷



Elimination of mother-to-child transmission of syphilis

Congenital syphilis rate (per 100,000 live births)⁹⁸



Antenatal care attendees tested for syphilis at first antenatal care visit⁹⁹



Antenatal care attendees who test positive for syphilis¹⁰⁰



Antenatal care attendees positive for syphilis who are treated appropriately¹⁰¹



<http://bit.ly/1jCx7sf>

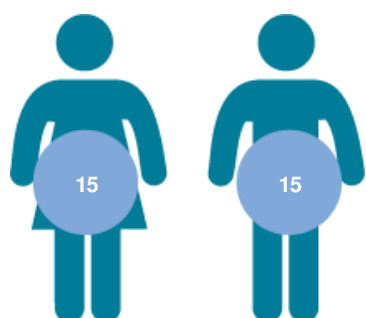
Focus on adolescents and youth

Young people need access to a range of SRHR and HIV information and services on a broad range of topics related to their physical, social, emotional, and sexual development.

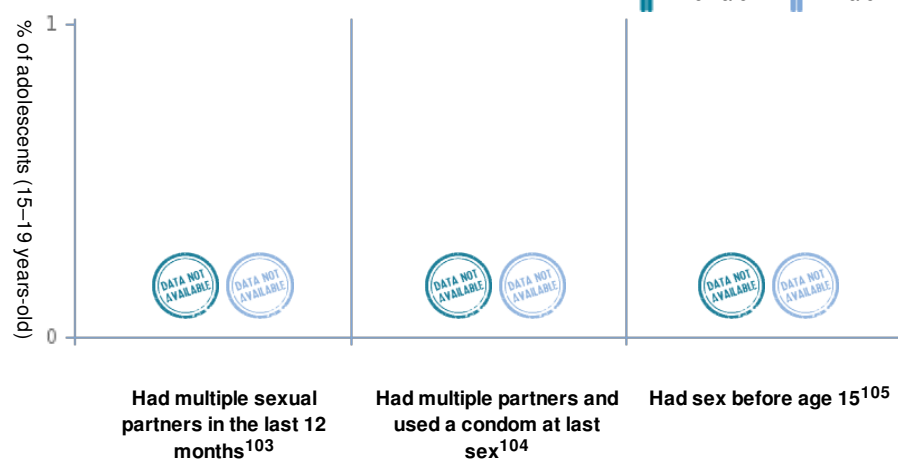
Young people, including those living with HIV and from key populations, need access to comprehensive services and a supportive legal framework.

Sexual behaviour

Median age at first sex among young people aged 20-24¹⁰²



Adolescents aged 15-19 who had:



Youth unemployment¹⁰⁹

Unmet need for family planning, among young women aged 15-19¹⁰⁶



Young women aged 15-19 who have ever had a child¹⁰⁷



Recent births to mothers under 20 that were unplanned¹⁰⁸



Young women aged 15-19 able to participate in decisions about their healthcare^{108a}



34%



HIV

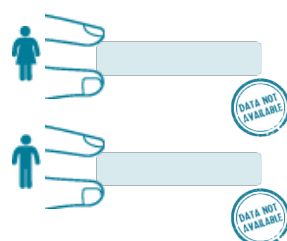
Estimated number of adolescents living with HIV aged 10-19¹¹⁰



Young people living with HIV aged 15-24¹¹¹



Adolescents aged 15-19 who were ever tested for HIV and received the results¹¹²



100

New HIV infections among adolescents aged 15-19¹¹³



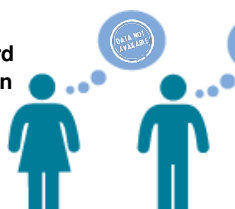
0

AIDS deaths among adolescents aged 10-19¹¹⁴

Knowledge and comprehensive sexuality education

▲ also p.4

Young people aged 15-19 who have heard of family planning on any of the three sources (radio, TV or newspapers)¹¹⁵



Adolescents aged 15-19 who have comprehensive knowledge of HIV¹¹⁶



Schools that provided skills-based HIV and sexuality education in the previous academic year¹¹⁷



Focus on key populations

Key populations, including men who have sex with men, people who use drugs, sex workers

and transgender people typically have higher HIV prevalence than the general population.

The criminalization of key populations drives people away from health services, increasing

vulnerability to negative SRHR and HIV outcomes, as well as to stigma, discrimination, and violence.

Key populations are often not reached with health services, including for SRHR and HIV, and frequently experience violation of their human rights.

▲ also p.4



Men who have sex with men



People who inject drugs



Sex workers



Transgender people



Population size estimate



HIV prevalence



HIV testing



Condom use

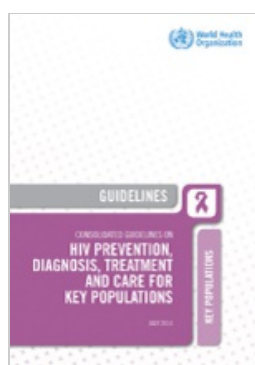
4,220 ¹¹⁸	3,114 ¹¹⁹	DATA NOT AVAILABLE	DATA NOT AVAILABLE
27.5% ¹²²	0.9% ¹²³	1% ¹²⁴	DATA NOT AVAILABLE
75% ¹²⁶	100% ¹²⁷	64.2% ¹²⁸	DATA NOT AVAILABLE
75% ¹³⁰	40% ¹³¹	96.3% ¹³²	DATA NOT AVAILABLE

Useful programme implementation tools* and guidelines



World Health Organization (2013) *Implementing comprehensive HIV/STI programmes with sex workers: practical approaches from collaborative interventions.*

<http://bit.ly/1ISZWVz>



World Health Organization (2014) *Consolidated guidelines on HIV prevention, diagnosis, treatment and care for key populations.*

<http://bit.ly/1rhtlgZ>



UNFPA et al. (2015) *Implementing comprehensive HIV and STI programmes with men who have sex with men.*

<http://bit.ly/1LWYfQ6>

*Similar implementation tools for HIV/STI programming with other key populations are currently under development.

Additional regional and national data

This infographic snapshot builds on an overarching framework defining HIV and SRHR linkages/ integration and provides related national data. Specific aspects of HIV and SRHR linkages/ integration vary by region and country due to different types of HIV epidemics and structural drivers of HIV and SRHR. Therefore, a differentiated approach to investment and programming is required.



The suggested way forward

1. **Disseminate the snapshot broadly** to key decision-makers in the government (e.g. Ministry of Health and National AIDS Commission), programme managers, donors, UN agencies, civil society organisations and community-based organisations, and use for advocacy at key events.
2. **Review the data** presented in the snapshot with key HIV and SRHR stakeholders to identify and discuss areas where further work is particularly needed.
3. **Convene a technical working group** with HIV and SRHR stakeholders to jointly plan, coordinate activities and monitor progress on HIV and SRHR linkages/integration.
4. **Work with the Ministries of Justice, Education and Health, and other appropriate sectors** to eliminate human rights violations, such as gender-based violence, early and forced marriage and stigma and discrimination.
5. **Use the snapshot** when developing and evaluating strategies, operational plans and funding proposals.
6. **Collaborate with relevant data collection entities** to fill gaps where data are not available.

Endnotes

1. GNP+, ICW, IPPF, UNAIDS, UNFPA, WHO and Young Positives (2009). Rapid Assessment Tool for Sexual and Reproductive Health and HIV Linkages: a generic guide. <http://srhhivlinkages.org/rapidassessment-tool/>
2. WHO, UNAIDS, UNFPA, IPPF (2008). Gateways to integration: a case study series. <http://www.srhhivlinkages.org>
3. UNAIDS (2010) 26th Meeting of UNAIDS Programme Coordinating Board, Background Paper: Sexual and Reproductive Health (SRH) services with HIV interventions in practice, paragraph 4 (page 5). http://srhhivlinkages.org/wp-content/uploads/2013/04/26thpcbthematicbackground_2010_en.pdf
- 3a. Data used in the HIV and SRHR Linkages Infographic Snapshot is the most recent data available.
4. UNFPA, WHO, IPPF (2012). Connecting sexual and reproductive health and HIV: Navigating the work in progress. http://www.srhhivlinkages.org/wp-content/uploads/LAWG_SRHHIVlinkages_summary1.pdf
- 4a. 2014. World Bank. <http://data.worldbank.org/indicator/>
- 4b. 2014. World Bank. <http://data.worldbank.org/indicator/>
- 4c. 2014. World Bank. <http://data.worldbank.org/indicator/>
5. Women of reproductive age is women aged 15–49. <http://www.who.int/mediacentre/factsheets/fs310/en/>. Lozano R, Naghavi M, Foreman K, et al. (2012) Global and regional mortality from 235 causes of death for 20 age groups in 1990 and 2010: a systematic analysis for the Global Burden of Disease Study 2010. *The Lancet*, 380(9859):2095-128.
6. 2014. UNAIDS 2014 estimates
7. 2014. UNAIDS 2014 estimates
8. 2014. UNAIDS 2014 estimates
9. 2014. UNAIDS 2014 estimates
10. 2014. UNAIDS 2014 child-level estimates not published
11. 2014. Indicator: Percentage of women and men aged 15-49 who received an HIV test in the past 12 months and know their results. UNAIDS GARPR
12. Lozano R, Naghavi M, Foreman K, et al. (2012). Global and regional mortality from 235 causes of death for 20 age groups in 1990 and 2010: a systematic analysis for the Global Burden of Disease Study 2010. *The Lancet*, 380(9859):2095-128.; AU (2012) Status Report on Maternal, Newborn, and Child Health. (African Union); WHO UNICEF, UNFPA, WB (2012) Trends in Maternal Mortality 1990-2010 (Geneva, WHO).
13. 2015. WHO, UNICEF, UNFPA, World Bank Group and the United Nations Population Division, The Maternal Mortality Estimation Inter-Agency Group (MMEIG). Trends in Maternal Mortality: 1990 to 2015. http://apps.who.int/iris/bitstream/10665/194254/1/9789241565141_eng.pdf?ua=1
14. 2015. UNFPA correspondence with National AIDS Programme, November 2016. UNAIDS estimates not published
15. UN Commission on Status of Women (2013). Agreed conclusions on the elimination and prevention of all forms of violence against women and girls. New York, UN CSW.
16. 2014. Indicator: Proportion of ever-married or partnered women aged 15-49 who experienced physical or sexual violence from a male intimate partner in the past 12 months. UNAIDS GARPR
17. <http://www.aidsinfo.nih.gov/guidelines/html/3/perinatalguidelines/162>.
18. 2015. UNFPA correspondence with National AIDS Programme, November 2016. UNAIDS estimates not published
19. Indicator: Percentage of pregnant women who were tested for HIV and who know their results (World Health Organisation UA3.4)
20. 2014. United Nations, Department of Economic and Social Affairs, Population Division (2014). Model-based Estimates and Projections of Family Planning Indicators 2014. New York: United Nations. http://www.un.org/en/development/desa/population/publications/dataset/contraception/data/Table_Model-based_estimates_Countries_Run20140520.xls
21. Indicator: Percentage of total demand for family planning among married or in-union women living with HIV aged 15 to 49 that is satisfied with modern methods (modern contraceptive prevalence divided by total demand for family planning)
22. WHO (2007). Global Strategy for the Prevention and control of sexually transmitted infections 2006-2015, Breaking the Chain of Transmission. Geneva, WHO.
23. Indicator: Number of adults reported with syphilis in the past 12 months. WHO Universal Access Indicator 1.17.6
24. 2013. UNAIDS GARPR
25. 2016-2020. National AIDS Control Programme (NAP)/Ministry of Public Health (MoPH) (2016). National Strategic Plan 2016-2020
- 25a. 2016. Coding conducted during meeting between UNFPA and MOPH, November 2016
26. There is no current national SRHR strategy
- 26a. IPPF and UNFPA coding (2015)
27. There is no current national SRH and HIV integration policy or strategy
- 27a. The data in this section only looks at the law itself and not how the law is implemented
28. 2016. NAP/MoPH. Correspondence with UNFPA Country Office, Lebanon, January 2016.
- 28a. Global Commission on HIV and the Law (2012). Risks, Rights and Health. Final Report July 2012, at p9 and p25. <http://www.hivlawcommission.org/index.php/report>; Ending overly broad criminalization of HIV non-disclosure, exposure and transmission: Critical scientific, medical and legal considerations. Guidance Note. http://www.unaids.org/sites/default/files/media_asset/20130530_Guidance_Ending_Criminalisation_0.pdf
29. 2012. Quick Reference Guide Entry and residence regulations for people living with HIV (2013-2013), Deutsche AIDS-Hilfe. http://www.hivtravel.org/Web/WebContent/EATG/File/Quick%20Ref/2012_2013_DAH_Quick_Reference_Guide_EN.pdf
- 29a. Global Commission on HIV and the Law (2012). Risks, Rights and Health. Final Report July 2012, at p10 and p61. <http://www.hivlawcommission.org/index.php/report>
30. 2016. Whilst there is no law, a statement has been made by the Ministry of Public Health Ministry against Stigma and Discrimination. Correspondance with UNFPA Lebanon Country Office, December 2016
- 30a. Global Commission on HIV and the Law (2012). Risks, Rights and Health. Final Report July 2012, at p9 and p50. <http://www.hivlawcommission.org/index.php/report>; The Lancet (2012). HIV in Men Who Have Sex with Men. <http://www.thelancet.com/series/hivin-men-who-have-sex-with-men>
- 30b. The data in this section only looks at the law itself and not how the law is implemented
31. 2015. Source: The Lesbian, Gay and Bisexual Map of World Laws, ILGA – available from http://old.ilga.org/Statehomophobia/ILGA_WorldMap_2015_ENG.pdf
- 31a. Global Commission on HIV and the Law (2012). Risks, Rights and Health. Final Report July 2012, at p9 and p50. <http://www.hivlawcommission.org/index.php/report>; The Lancet (2012). HIV in Men Who Have Sex with Men. <http://www.thelancet.com/series/hivin-men-who-have-sex-with-men>
32. 2014. UNAIDS GARPR
- 32a. Global Commission on HIV and the Law (2012). Risks, Rights and Health. Final Report July 2012, at p9 and p43. <http://www.hivlawcommission.org/index.php/report>; UNAIDS (2012). UNAIDS Guidance Note on HIV and Sex Work. 2012 Update. http://www.unaids.org/sites/default/files/media_asset/JC2306_UNAIDS-guidance-note-HIV-sex-work_en_0.pdf; The Lancet (2014). HIV and sex workers. <http://www.thelancet.com/series/hiv-and-sex-workers>
33. 2015. The Death Penalty for Drug Offences: Global Overview 2015, International Harm Reduction Association http://www.ihra.net/files/2015/10/07/DeathPenaltyDrugs_Report_2015.pdf
- 33a. 6(2); ECOSOC (25 May 1984) Implementation of the safeguards guaranteeing protection of the rights of those facing the death penalty, Resolution 1984/50; United Nations Information Centre. INCB encourages States to consider the abolition of the death penalty for drug-related offences, 5 March 2014. http://www.incb.org/documents/Publications/PressRelease/PR2014/press_release_050314.pdf
34. 2014. UNAIDS GARPR
- 34a. Global Commission on HIV and the Law (2012). Risks, Rights and Health. Final Report July 2012, at p10 and p35. <http://www.hivlawcommission.org/index.php/report>; United Nations. 2012. Joint statement on compulsory drug detention and rehabilitation centres. http://www.unaids.org/sites/default/files/en/media/unaids/contentassets/documents/document/2012/JC2310_Joint%20Statement6March12FINAL_en.pdf

35. 2014. Identities.Mic. "7 Countries Giving Transgender People Fundamental Rights the U.S. Still Won't". <http://mic.com/articles/87149/7-countries-giving-transgender-people-fundamentalrights-the-u-s-still-won-t> Accessed June 2015
- 35a. Global Commission on HIV and the Law (2012). Risks, Rights and Health. Final Report July 2012, at p10, p50 and p54. <http://www.hivlawcommission.org/index.php/report>
36. 2014. Lebanese Parliament, Law 293/2014
- 36a. Convention on the Elimination of Discrimination against Women. General Recommendation No. 19 (11th session, 1992). Violence against women, paras 1, 7 and 24(b). <http://www.un.org/womenwatch/daw/cedaw/recommendations/recomm.htm>
37. 2014. Lebanon Allows Marital Rape in New Domestic Violence Law, April 2, 2014. <http://www.clarionproject.org/news/lebanon-allows-marital-rape-new-domestic-violence-law#>
- 37a. Global Commission on HIV and the Law (2012). Risks, Rights and Health. Final Report July 2012, at p9 and p69. <http://www.hivlawcommission.org/index.php/report>
38. 2014. Indicator: Are there laws that allow free entry into marriage and divorce? WHO (2014). Global Status Report on Violence Prevention. http://www.who.int/violence_injury_prevention/violence/status_report/2014/country_profiles/en/
- 38a. Convention on the Elimination of Discrimination against Women. General Recommendation No. 21 (13th session, 1994). Equality in marriage and family relations. <http://www.un.org/womenwatch/daw/cedaw/recommendations/recomm.htm>
39. 2014. Law 293/2014, promulgated by the President of the Republic on 07/05/14 and published in the Official Gazette No 21 dated 15.05.14.
- 39a. Convention on the Elimination of Discrimination against Women. General Recommendation No. 19 (11th session, 1992) Violence against women, paras 23 and 24(b). <http://www.un.org/womenwatch/daw/cedaw/recommendations/recomm.htm>
40. 2009. Ministerial Communiqué number 18/m/2009 from the Ministry of Education and Higher Education on the issuance of a National Curriculum on Life skills Reproductive Health Education From a Gender Perspective. 26 August 2009
41. 2014. United Nations, World Population Policies Database. http://esa.un.org/poppolicy/about_database.aspx Code Penal. Legislative Decree No. 340/NI of 1 March 1943, Articles Articles 539-546, supplemented by Presidential Decree No. 13187 of 20 October 1969 (while affirming that abortion is illegal, permits an abortion to be performed when this is the only means of saving a pregnant woman whose life is placed in great danger).
42. Indicator: Laws against female genital mutilation? WHO (2014). Global Status Report on Violence Prevention. http://www.who.int/violence_injury_prevention/violence/status_report/2014/country_profiles/en/
43. 2001. <http://www.ageofconsent.com/ageofconsent.htm>
44. 2007. NAP/MOPH and the UN Theme Group for HIV/AIDS. Standard National Protocol of the VCT.
45. 2016. Correspondence with UNFPA Country Office, Lebanon, January 2016.
46. Indicator: legal age for consent to sexual intercourse
47. 2014. Indicator: Percentage of women and men aged 15–49 who report discriminatory attitudes towards people living with HIV. UNAIDS GARPR
48. People Living with HIV Stigma Index. IPPF, GNP+, ICW, UNAIDS, 2008. <http://www.stigmaindex.org/>
49. 2013. The People Living with HIV Stigma Index: Lebanon 2013. UNFPA, NAP, MOPH.
50. UN (2015) Sustainable Development Goals. <https://sustainabledevelopment.un.org/?menu=1300>
- 50a. Indicator: Ability to participate in decisions regarding their own health
- 50b. Indicator: Ability to participate in decisions regarding their own health
51. WHO and UNAIDS (2013) 16 ideas for addressing violence against women in the context of HIV epidemic: a programming tool. http://apps.who.int/iris/bitstream/10665/95156/1/9789241506533_eng.pdf
52. Indicator: Proportion of ever-married or partnered women aged 15-49 who experienced physical or sexual violence from a male intimate partner in the past 12 months. UNAIDS GARPR
53. 2005-2013. UNICEF State of The World's Children 2015 Country Statistical Information http://www.unicef.org/statistics/index_countrystats.html
- 53a. Indicator: The percentage of women age 15-49 who agree that a husband is justified in hitting or beating his wife if she refuses to have sexual intercourse with him.
- 53b. Indicator: Percentage of women ages 15-49 who believe a husband/partner is justified in hitting or beating his wife/partner for any of the following five reasons: argues with him; refuses to have sex; burns the food; goes out without telling him; or when she neglects the children. Demographic and Health Surveys (DHS) and Multiple Indicator Cluster Surveys (MICS) <http://data.worldbank.org/indicator/SG.VAW.REAS.ZS>
54. Indicator: Intimate partner violence prevention programmes. WHO (2014). Global Status Report on Violence Prevention. http://www.who.int/violence_injury_prevention/violence/status_report/2014/en/
55. UNAIDS (2014). Global AIDS response progress reporting 2014: construction of core indicators for monitoring the 2011 UN political declaration on HIV/AIDS.
56. Indicator: % of children whose households received external support, 2010-2014. UNICEF Statistical Update 2015. Table 6: Protection, care and support for children affected by HIV and AIDS in low- and middle-income countries: Percentage of children whose households received external support. <http://data.unicef.org/hiv-aids/care-support.html>
57. Indicator: Orphan school attendance ratio, 2010-2014. UNICEF Statistical Update 2015. Table 6: Protection, care and support for children affected by HIV and AIDS in low- and middle-income countries: Percentage of children whose households received external support. <http://data.unicef.org/hiv-aids/care-support.html>
58. UNAIDS 2014 child-level estimates not published
59. 2011. WHO Global Health Observatory Data Repository. Doctors per 1,000, data by country <http://apps.who.int/gho/data/view.main.92100>
60. 2011. WHO Global Health Observatory Data Repository. Nurses per 1,000, data by country <http://apps.who.int/gho/data/view.main.92100>
61. Indicator: Community and traditional health workers density (per 1000 population). WHO Global Health Observatory Data Repository. Density per 1000 Data by country <http://apps.who.int/gho/data/node.main.A1444>
62. 2014. MOPH, Lebanese Society for Obstetrics and Gynecology (LSOG), UNFPA (2014). Reproductive Health Service Delivery Guidelines, revised 2014.
63. 2016. UNFPA correspondence with NAP manager at the Ministry of Public Health, November 2016
64. 2016. UNFPA correspondence with NAP manager at the Ministry of Public Health, November 2016
65. 2016. UNFPA correspondence with NAP manager at the Ministry of Public Health, November 2016
66. 2016. UNFPA correspondence with NAP manager at the Ministry of Public Health, November 2016
67. 2016. UNFPA correspondence with NAP manager at the Ministry of Public Health, November 2016
68. 2016. UNFPA correspondence with NAP manager at the Ministry of Public Health, November 2016
69. 2016. UNFPA correspondence with Ministry of Public Health, November 2016
70. 2015. WHO Universal Access
71. 2016. UNFPA correspondence with Ministry of Public Health, November 2016
72. 2010. IPPF, UNAIDS, UNFPA, WHO (2011). Rapid assessment of sexual and reproductive health and HIV linkages: Lebanon http://srhhivlinkages.org/wp-content/uploads/2013/04/ras_lebanon_web_en.pdf
73. 2010. IPPF, UNAIDS, UNFPA, WHO (2011). Rapid assessment of sexual and reproductive health and HIV linkages: Lebanon http://srhhivlinkages.org/wp-content/uploads/2013/04/ras_lebanon_web_en.pdf
74. World Bank, WDI. Statistical Capacity Index <http://databank.worldbank.org/data/reports.aspx?source=Statistical-capacity-indicators#>
75. 2014. WHO Global Health Observatory Data Repository. Testing and counselling facilities Data by country <http://apps.who.int/gho/data/node.main.625TC?lang=en>
76. 2016. All the PHC centers pertaining to the Ministry of Public Health. UNFPA correspondence with MOPH, November 2016
77. GNP+, ICW, IPPF, UNAIDS, UNFPA, WHO and Young Positives (2009). Rapid Assessment Tool for Sexual and Reproductive Health and HIV Linkages: a generic guide. <http://srhhivlinkages.org/rapidassessment-tool/>
78. 2011. IPPF, UNAIDS, UNFPA, WHO (2011). Rapid assessment of sexual and reproductive health and HIV linkages: Lebanon http://srhhivlinkages.org/wp-content/uploads/2013/04/ras_lebanon_web_en.pdf
79. 2014. UNAIDS GARPR
80. 2013. UNAIDS GARPR

81. UNAIDS (2011). Countdown to zero. Global plan for the elimination of new HIV infections among children by 2015 and keeping their mothers alive. http://www.unaids.org/en/media/unaids/contentassets/documents/unaidspublication/2011/20110609_JC2137_Global-Plan-Elimination-HIV-Children_en.pdf
82. 2015. UNFPA correspondence with National AIDS Programme, November 2016. UNAIDS estimates not published
83. 2015. UNFPA correspondence with National AIDS Programme, November 2016. UNAIDS estimates not published
84. 2004. Lebanon Family Health Survey 2004 – from UNICEF 2015 – <http://data.unicef.org/maternal-health/antenatal-care.html> - Antenatal care coverage - at least one visit with skilled health personnel.
85. Indicator: percentage of women aged 15 to 49 with a live birth in a given time period that received antenatal care four or more times. UNICEF. Monitoring the Situation of Children and Women. Antenatal care coverage database. <http://data.unicef.org/maternal-health/antenatal-care.html>
86. Indicator: Percentage of pregnant women attending antenatal care (ANC) whose male partner was tested for HIV in the last 12 months. WHO Universal Access Indicator 3.5
87. 2014. UNAIDS 2014 estimates
88. 2014. United Nations, Department of Economic and Social Affairs, Population Division (2014). Model-based Estimates and Projections of Family Planning Indicators 2014. New York: United Nations. http://www.un.org/en/development/desa/population/publications/dataset/contraception/data/Table_Model-based_estimates_Countries_Run20140520.xls
89. 2015. UNFPA correspondence with National AIDS Programme, November 2016. UNAIDS estimates not published
90. 2014. UNAIDS 2014 estimates. Available from <http://www.childrenandaids.org/>
91. 2015. UNFPA correspondence with National AIDS Programme, November 2016. UNAIDS estimates not published
92. 2016. ARV Dispenser Center Statistics. 2016/NAP/Ministry of Public Health. 2016
93. Indicator: Percentage of pregnant women who were tested for HIV and who know their results (World Health Organisation UA3.4)
94. 2004. Lebanon Family Health Survey 2004 – from UNICEF 2015 <http://data.unicef.org/maternal-health/delivery-care.html> - Skilled attendant at birth.
95. 2014. Indicator: Percentage of total demand for family planning among married or in-union women living with HIV aged 15 to 49 that is satisfied with modern methods (modern contraceptive prevalence divided by total demand for family planning)
96. WHO (2007). Global elimination of congenital syphilis: rationale and strategy for action. <http://www.who.int/reproductivehealth/publications/rtis/9789241595858/en>
97. WHO (2014). Global guidance on criteria and processes for validation: elimination of mother-to-child transmission (EMTCT) of HIV and syphilis. <http://www.who.int/reproductivehealth/publications/rtis/9789241505888/en>
98. Indicator: Congenital syphilis rate per 100,000 live births. WHO Global Health Observatory data repository. Congenital syphilis. <http://apps.who.int/gho/data/view.main.CONGENITALSYPFSTlv>
99. Indicator: Percentage of women accessing antenatal care services who were tested for syphilis at first antenatal care visit. WHO Global Health Observatory data repository. <http://apps.who.int/gho/data/view.main.23610>
100. Indicator: Percentage of antenatal care attendees who tested positive for syphilis. WHO Global Health Observatory data repository. <http://apps.who.int/gho/data/view.main.23620>
101. Indicator: Percentage of antenatal care attendees positive for syphilis who received treatment. WHO Global Health Observatory data repository. <http://apps.who.int/gho/data/view.main.A1362STlv>
102. 2012. UNFPA, UNICEF, WHO, NAP, MoPH (May 2012). Knowledge, Attitudes, Behavior, and Practices Survey among Young People on Reproductive and Sexual Health, STI/HIV/AIDS, and High Risk Behaviors.
103. 2010-2014. Indicator: Percentage of adolescents (aged 15–19) who reported having sexual intercourse with more than one partner in the last 12 months. UNICEF global databases, 2014, based on DHS, MICS and other national surveys, 2006–2014. <http://www.childrenandaids.org/>
104. 2010-2014. Indicator: Percentage of adolescents (aged 15–19) who reported having sexual intercourse with more than one partner in the last 12 months and who reported the use of a condom during their last sexual intercourse. UNICEF global databases, 2014, based on DHS, MICS and other national surveys, 2006–2014. <http://www.childrenandaids.org/>
105. 2010-2014. Indicator: Percentage of young women (aged 15-19) who had sex before age 15. UNICEF global databases, 2014, based on DHS, MICS and other national surveys, 2010–2014. <http://www.childrenandaids.org/>
106. Indicator: Unmet need for contraception among women aged 15-49, married or in union
107. Indicator: Percentage of teenage women (age 15-19) who have begun childbearing
108. Indicator: Percent of recent births to mothers <20 that were unplanned
- 108a. Indicator: Percentage of currently married women age 15-49 who usually make specific decisions either by themselves or jointly with their husband on their own health care
109. 2012. World Bank. 2012. Lebanon - Good jobs needed : the role of macro, investment, education, labor and social protection policies (MILES) - a multi-year technical cooperation program. Washington, DC: World Bank. <http://documents.worldbank.org/curated/en/2012/12/17464894/lebanon-good-jobs-needed-role-macro-investment-education-labor-social-protection-policies-miles-multi-year-technical-cooperation-program>
110. 2014. UNAIDS 2014 estimates not published
111. 2014. UNAIDS 2014 estimates
112. Indicator: Percentage of adolescents (aged 15–19) who have been tested for HIV in the last 12 months and received the result of their most recent test. Female. UNICEF global databases, 2014, based on DHS, MICS and other national surveys, 2010–2014. <http://www.childrenandaids.org/> Data refer to most recent year available.
113. 2014. UNAIDS 2014 estimates
114. 2015. UNFPA correspondence with National AIDS Programme, November 2016. UNAIDS estimates not published
115. Indicator: % of women aged 15–19 who have heard of family planning on any of three sources (radio, television or newspaper)
116. Indicator: Percentage of adolescents (aged 15–19) with comprehensive, correct knowledge of HIV. Comprehensive, correct knowledge about HIV and AIDS is defined as correctly identifying the two major ways of preventing the sexual transmission of HIV (using condoms and limiting sex to one faithful, uninfected partner), rejecting the two most common local misconceptions about HIV transmission and knowing that a healthy-looking person can transmit HIV. UNICEF global databases, 2014, based on DHS, MICS and other national surveys, 2010–2014. Table 4 <http://www.childrenandaids.org/> Data refer to most recent year available.
117. Indicator: Percentage of schools that provided life skills-based HIV and sexuality education in the previous academic year.
118. 2015. Middle East and North Africa Harm Reduction Association (MENAHRRA) Size Estimation, Risk Behavior Assessment, and Disease Prevalence in Populations at High Risk for HIV Infection in Lebanon
119. 2014. GARPR
120. Indicator: Sex workers population size estimate. UNAIDS GARPR
121. Indicator: Transgender people population size estimate
122. 2014. GARPR
123. 2014. GARPR
124. 2013. GARPR
125. Indicator: Percentage of transgender people who are living with HIV.
126. 2014. GARPR
127. 2014. GARPR
128. 2011. GARPR
129. Indicator: Percentage of transgender people who received an HIV test in the past 12 months and know their results.
130. 2014. GARPR
131. 2011. GARPR
132. 2013. GARPR
133. Indicator: Percentage of transgender people reporting the use of a condom the last time they had sexual intercourse

Inter-Agency Working Group on SRH and HIV Linkages

The Inter-agency Working Group on Sexual and Reproductive Health (SRH) and HIV Linkages is convened by UNFPA, WHO, and IPPF and works with more than 20 organizations to:

- advocate for political commitment to a linked SRH and HIV agenda;
- support national action to strengthen SRH and HIV linkages at the policy, systems, and service delivery levels; and
- create a shared understanding of SRH and HIV linkages by building the evidence base and sharing research, good practice, and lessons learnt.

Key achievements since 2004



To find out more

Visit <http://srhhivlinkages.org> - a collection of SRHR and HIV linkages resources. For a list of current members of the IAWG on SRH and HIV Linkages visit <http://bit.ly/1kzQDWB>

Disclaimer: All reasonable precautions have been taken by the publishers to verify the information contained in this publication. However, the published material is being distributed without warranty of any kind, either expressed or implied. The responsibility for the interpretation and use of the material lies with the reader. In no event shall the IAWG on SRH and HIV Linkages or any organization whose logo appears on this document be liable for damages arising from use of this publication. This publication does not necessarily represent decisions the IAWG on SRH and HIV Linkages or any organization whose logo appears on this document.

